



## Review

## Use of ovary culture techniques in reproductive toxicology



Agnes Stefansdottir<sup>a</sup>, Paul A. Fowler<sup>b</sup>, Nicola Powles-Glover<sup>c</sup>, Richard A. Anderson<sup>d</sup>,  
Norah Spears<sup>a,\*</sup>

<sup>a</sup> Centre for Integrative Physiology, University of Edinburgh, Edinburgh EH8 9XD, United Kingdom

<sup>b</sup> Division of Applied Medicine, Institute of Medical Sciences, University of Aberdeen, Aberdeen AB25 2ZD, United Kingdom

<sup>c</sup> AstraZeneca, Alderley Park, Macclesfield SK10 4TG, United Kingdom

<sup>d</sup> MRC Centre for Reproductive Health, Queen's Medical Research Institute, University of Edinburgh, Edinburgh EH16 4TJ, United Kingdom

## ARTICLE INFO

## Article history:

Received 16 May 2014

Received in revised form 14 July 2014

Accepted 6 August 2014

Available online 19 August 2014

## Keywords:

Ovary

Follicle

Tissue culture

*In vitro*

Toxicology

Pharmaceutical

EDC

## ABSTRACT

There is increasing evidence to indicate that a substantial number of both man-made and naturally occurring chemicals are disruptive to human and wildlife reproductive health. Currently, reproductive toxicology testing is primarily carried out *in vivo*, however, in the past 50 years, various culture methods have been developed with the aim of growing ovarian follicles *in vitro*. These culture systems have become a widely used tool in reproductive biology and toxicology. In this review we describe how reproductive toxicology of the ovary is greatly enhanced by *in vitro* studies. Experiments using *in vitro* ovarian cultures to understand or detect damage to the ovary itself and to its specialised structures of the follicles and oocytes, allows for faster screening of potential developmental and/or reproductive toxicants.

© 2014 The Authors. Published by Elsevier Inc. This is an open access article under the CC BY license (<http://creativecommons.org/licenses/by/3.0/>).

## Contents

1. Introduction .....	118
1.1. The ovary .....	118
2. Toxicology and reproductive function .....	118
2.1. Female reproductive toxicity .....	120
2.1.1. Mechanisms of action of reproductive toxicants .....	120
3. <i>In vitro</i> culture systems as a tool for studying reproductive toxicology .....	121
3.1. Embryonic ovary culture .....	122
3.2. Rodent neonatal ovary culture .....	122
3.3. Follicle or cumulus–oocyte–complex cultures .....	122
4. Comparison of <i>in vivo</i> and <i>in vitro</i> effects of pharmaceuticals and EDCs .....	122
4.1. Pharmaceutical compounds .....	122
4.1.1. Cyclophosphamide (Cy) .....	122
4.1.2. Diethylstilbestrol (DES) .....	123
4.1.3. Doxorubicin .....	123
4.2. Plasticisers .....	123
4.2.1. Bisphenol A (BPA) .....	123
4.2.2. Mono(2-ethylhexyl)phthalate (MEHP) .....	125
4.3. Organochlorine pesticides .....	126
4.3.1. Dichlorodiphenyltrichloroethane (DDT)/dichlorodiphenyldichloroethylene (DDE) .....	126

\* Corresponding author at: Centre for Integrative Physiology, University of Edinburgh, Hugh Robson Building, George Square, EH8 9XD, Scotland, United Kingdom.  
Tel.: +44 651 7112.

E-mail address: [norah.spears@ed.ac.uk](mailto:norah.spears@ed.ac.uk) (N. Spears).

4.3.2.	Methoxychlor (MXC) .....	126
4.4.	Occupational chemicals .....	126
4.4.1.	4-Vinylcyclohexene diepoxide (VCD) .....	126
4.4.2.	Polychlorinated biphenyls (PCBs) .....	126
4.5.	Phyto-estrogens .....	127
4.5.1.	Genistein .....	127
5.	Comparison of results from <i>in vivo</i> and <i>in vitro</i> studies .....	127
6.	Regulatory requirements for reproductive toxicological testing .....	128
6.1.	Regulation of pharmaceuticals and agrochemicals .....	129
6.2.	Regulation of environmental compounds .....	129
6.3.	Limitations of regulatory testing .....	130
7.	Conclusions .....	130
	Conflict of interest .....	131
	Transparency document .....	131
	Acknowledgements .....	131
	References .....	131

## 1. Introduction

### 1.1. The ovary

The ovary is central to female reproductive function, the site within which germ cells form follicles, develop and mature (Fig. 1). These cells communicate with each other and with ovarian stromal cells. Mammalian oocytes develop from primordial germ cells during gestation [1]. Following the proliferative stage, primordial germ cells then enter a pre-meiotic state of DNA replication before entering prophase I of meiosis. They then progress through the initial stages of meiosis, before entering meiotic arrest, around the time of follicle formation (Fig. 2) [2,3]. The oocytes remain in this meiotically arrested state throughout the phase of follicular development, thus the growing ovarian follicle contains an oocyte arrested in prophase I of meiosis, surrounded by somatic cells (granulosa and theca cells) as well as a basement membrane (BM). In the post-pubertal ovary in particular, as an oocyte grows and matures, its follicle undergoes changes due to proliferation of the granulosa cells and formation of the fluid filled antral cavity, resulting in a dramatic increase in follicle size. Once it has reached full maturation, the pre-ovulatory, Graafian follicle expels its oocyte during ovulation, at which point the oocyte exits meiotic arrest and completes meiosis I.

The ovary is not only responsible for producing oocytes, but is also an important endocrine gland, the source of sex steroids which link reproductive and non-reproductive organs to the timing of the ovarian cycle. It is in the growing follicle that the majority of estrogens in the body are produced and once the oocyte has been ovulated, the remainder of the follicle becomes a corpus luteum (CL), a temporary endocrine structure secreting the progesterone critical for the establishment and initial maintenance of pregnancy. The ovary is responsive to hormones secreted from the anterior pituitary, in turn controlled by the hypothalamus, with which it is locked into a complex cyclical pattern of communication and feedback that underpins successful female reproduction. Ovarian follicles are dependent on both external and internal hormones for their growth, development, maturation and ovulation. Follicle growth through the primordial, primary and secondary stages is gonadotropin-independent, regulated primarily by oocyte-derived factors such as growth differentiation factor 9 (GDF9), bone morphogenetic protein 15 (BMP15) and local somatic-derived factors such as anti-Müllerian hormone (AMH) [4]. Once a follicle transits into the pre-antral stage, its growth to the early-antral stage is gonadotropin responsive, with further growth dependent on gonadotropins [5].

In recent years, both environmental and synthetic pharmaceutical compounds with endocrine-mimicking, -modulating or

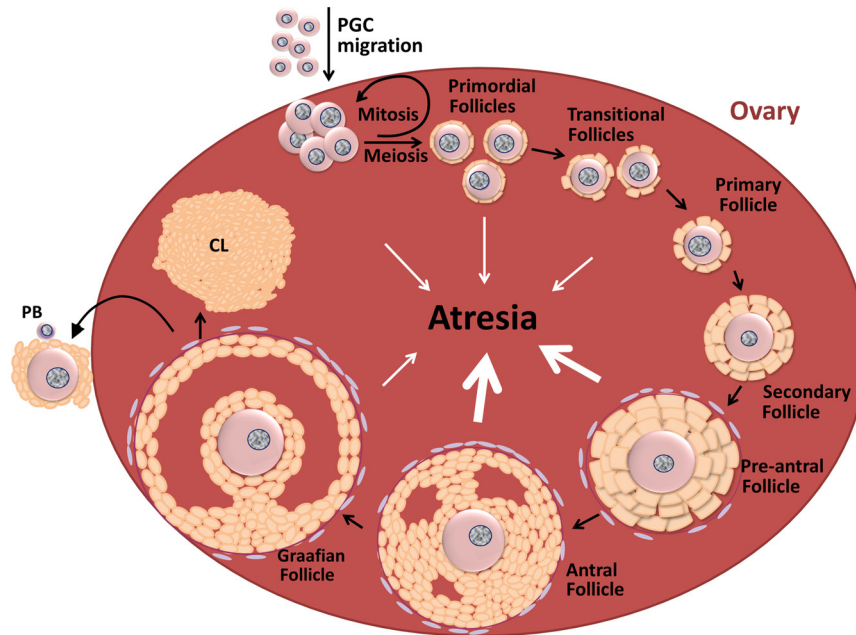
-inhibiting ability have become an increasing health concern. These compounds have reported harmful effects on gamete development and on the developing foetus and neonate [6]. Their relevance to human pregnancy has been identified in a recent opinion paper from the Royal College of Obstetricians and Gynaecologists (RCOG) which also highlighted the issue of exposure to multiple sources of chemicals. That paper outlined the potential reproductive hazards associated with exposure to the developing foetus of chemicals with the potential to interfere with foetal germ cells in the developing ovary, the effects of which would only manifest in the F2 generations, thus not becoming evident until decades later [7].

Various toxicological studies have been carried out on different animal models both *in vivo* and *in vitro* in order to investigate their effects on the female reproductive system [8]. Both types of toxicology testing have advantages and limitations, which must be carefully considered when planning a toxicological study. Here, we review the role of *in vitro* studies in the examination of toxicological effects on the ovary, comparing results from such methods to the effects of 'real-life', *in vivo*, exposure.

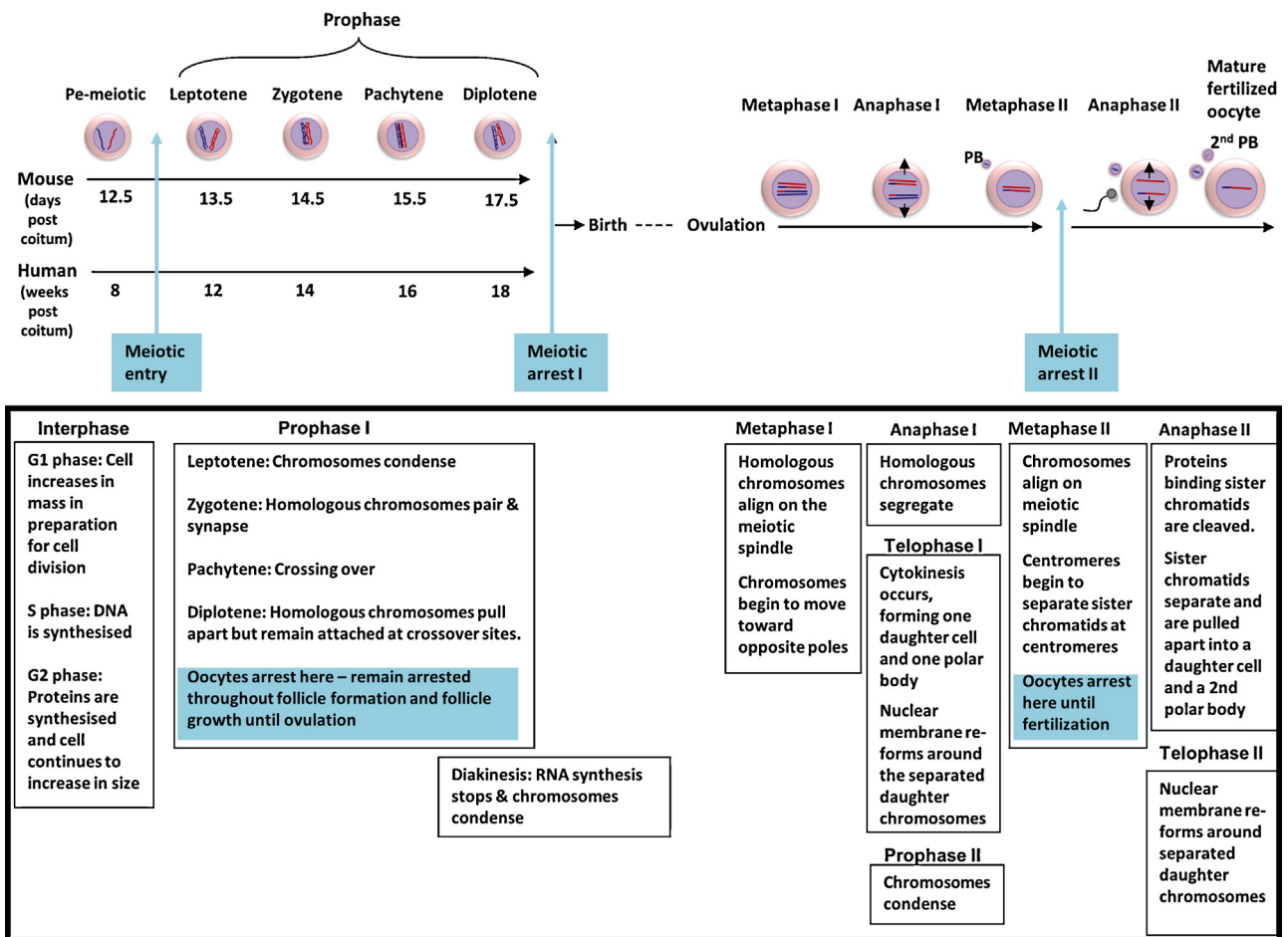
## 2. Toxicology and reproductive function

The environmental toxicants and pharmaceuticals of concern regarding reproductive function are from a broad spectrum of chemicals. One group in particular, endocrine disrupting compounds (EDCs), constitute a major focus. EDCs have been described by the United States Environmental Protection Agency (USEPA) as agents that 'interfere with synthesis, secretion, transport, binding or elimination of natural hormones in the body that are responsible for maintenance of homeostasis, reproduction, development and/or behaviour' [9]. Pharmaceutical and chemical companies produce novel chemicals in the form of new drugs, and widely used industrial and agricultural compounds, which can, in some cases, act as EDCs [10]. Humans are exposed to thousands of these natural or man-made chemicals throughout their lifespan [6,10–12]. Some are ingested as drugs or absorbed through the skin *via* beauty products such as soaps and perfumes [10], whereas others can leach out of plastic or be inhaled from cigarette smoke, pollution or vehicle exhausts (Table 1).

There is increasing evidence suggesting that certain pharmaceuticals and EDCs have the potential to interfere with endocrine function, biosynthesis or homeostatic control, alter reproductive development and fertility and result in reproductive disorders [13,14]. Reproductive toxicants can interfere with endocrine mechanisms due to their weak intrinsic hormonal activity, most often by mimicking or inhibiting estrogens through binding to nuclear, membrane, neurotransmitter and/or orphan receptors.



**Fig. 1.** Follicle growth in a human ovary. Proliferating primordial germ cells (PGCs) migrate to, and invade the developing ovary to form germ cell nests. They proliferate at a high rate, then enter meiosis and form primordial follicles as the germ cell nests break down. Throughout the reproductive lifespan, small cohorts of primordial follicles are continually released from dormancy as they enter the growing pool. The vast majority of growing follicles are lost to atresia, but beginning at puberty, a few follicles grow to the Graafian stage, normally resulting in the release of one oocyte each menstrual cycle. The remainder of the ovulatory follicle forms the corpus luteum (CL).



**Fig. 2.** Meiosis in oocytes. Stages and phases of mammalian meiosis, including two meiotic arrests during prophase I and metaphase II. The figure demonstrates chromosomal behaviour during meiotic progression in the mouse and human, with the time-course of events leading to the formation of an arrested oocyte within the growing follicle and ultimately, a mature fertilised oocyte.

**Table 1**  
Overview of some of the most common EDCs and their sources.

EDCs	Exposures and uses	References
Alkyl phenol	Detergents, cosmetics, paints	[15]
Bisphenol A (BPA)	Polyester–styrene resins, plastic food containers, baby bottles, eating utensils	[16]
Chlordane	Insecticide	[16]
Dioxins	Paper manufacturing, herbicides, incinerators	[16]
DDT and MXC	Organochlorine pesticides	[8]
Heavy metals (cadmium, lead, mercury)	Batteries, pigments, pharmaceuticals, plastic stabilisers, burning of fossil fuels and the incineration of municipal waste	[16,17]
Phthalates	Soft plastic chew toys, nail varnish, perfumes, flavourings and solvents	[16,18]
Phyto-estrogens	Soy, grains	[16]
Polybrominated diphenyl ethers (PBDEs)	Flame retardants	[16]
Polychlorinated biphenyls (PCBs)	Flame retardants, adhesives, electrical transformers	[15,16]
Polycyclic aromatic hydrocarbons (PAHs)	Industrial air pollution, coal and coke burners, tobacco tar	[16]
Trichlorfon (TCF)	Organophosphate insecticide	[19]
Triclosan	Antibacterial agent in personal care and household products	[20]
4-Vinylcyclohexene diepoxide (VCD)	Occupational chemical, reactive diluent for diepoxides and epoxy resins	[21]

### 2.1. Female reproductive toxicity

Given that reproductive toxicology research is carried out not only *in vivo*, but also using *in vitro* cultures [22], the main focus of this review is to examine and compare effects of compounds that have been tested both *in vivo* and *in vitro*. The majority of data reviewed will refer to EDCs since they have been more widely reported in female reproductive toxicology research in both *in vivo* and *in vitro* studies. In contrast, there is relatively little information on the effects of pharmaceutical compounds *in vitro*, other than in the examination of the effects of chemotherapy agents on the ovary. Chemotherapy agents can, none-the-less, have very important effects on the ovary [23,24].

Human epidemiological studies have shown an association between exposure to EDCs during development and adverse health outcomes in females [13,25–28]. For some chemicals, EDCs have the ability to disturb crucial pathways within the hypothalamic–pituitary–ovary axis at all stages of life: pre-natal, pre-pubertal and adulthood [13,22,29] (Table 2). However, certain periods of reproductive life are more susceptible to harm by EDC exposure than others. For example, foetuses exposed to estrogenic products through soy consumption of the mother and subsequently transferred *via* the placenta are more vulnerable than those exposed as adults, particularly if exposure to the estrogenic agents in soy products is at the critical period of germ cell nest breakdown and entry of PGCs into meiosis [30,31]. Between 1940 and 1970, pregnant women at risk of miscarriage were prescribed the xeno-oestrogen diethylstilbestrol (DES) [32]. Foetuses are exposed to endogenous oestrogen throughout pregnancy, but girls exposed to DES *in utero* during that critical period of reproductive tract development developed reproductive tract abnormalities and also had increased incidence of cervical–vaginal cancer later in life [33]. Any reproductive toxicant that has a direct effect on the ovary may also be able to alter epigenetic mechanisms in the oocyte, resulting in trans-generational epigenetic effects [31,34–37]. Therefore, subtle modifications to gene expression independent of gene mutations are entirely possible. An example of this type of germline transmission of an epigenetically modified trait is suggested in vinclozolin-treated rats, although the results are somewhat controversial [37–40].

#### 2.1.1. Mechanisms of action of reproductive toxicants

Pre- and post-natal ovaries contain large numbers of germ cells and follicles at various stages of development. Pre-natally, this includes the rapidly proliferating primordial germ cells (PGCs) and oocytes undergoing the first meiotic division. Drug-induced damage at this time markedly reduces the post-natal follicle pool [41]. The mature ovary contains primordial follicles with all potentially viable oocytes in meiotic arrest, dividing granulosa cells

and maturing oocytes of growing follicles, as well as ovulating oocytes resuming meiosis. The ever-changing environment must be carefully considered when studying the effects of environmental chemicals on the ovary, as follicles in different stages of growth may well vary in their susceptibility to different compounds.

Following follicle formation and growth initiation, ovarian follicles enter a period of continuous development until they either undergo atresia or develop to the Graafian stage, accompanied by rapid granulosa cell proliferation. That continual growth state, accompanied by the meiotic arrest of the oocyte for up to 45 years in humans, makes them particularly vulnerable targets for reproductive toxicants. The somatic cells and the BM of the follicle can be thought of as a protective sheath enclosing the oocyte, but this does not necessarily protect it from the effect of mutagens, directly or indirectly. The majority of toxic compounds are able to access the ovary *via* the circulation, but if these toxicants are able to pass through the BM, then the oocyte can also potentially be affected. Even if they directly affect only granulosa or thecal cells, they are still able to affect the oocyte indirectly. Once in the ovary, reproductive toxicants may be further metabolised, which may reduce or increase the risks, depending upon the metabolites generated [42].

Compounds targeting the primordial pool can have highly adverse effects on fertility, with broader consequences than those targeting growing follicles. If the primordial pool of follicles is damaged, future follicle growth and ovulation will be affected. At worst, a chemical that interferes markedly with the resting pool will likely result in premature ovarian insufficiency (POI) by depleting the ovarian reserve of primordial follicles [43]. In contrast, if a compound specifically targets growing or pre-antral follicles, perhaps by affecting dividing granulosa cells, these follicles will undergo atresia, resulting in cyclic disturbances for the few months following exposure to the compound. However, once the compound and its effects are removed, new follicles (from the unaffected resting pool) will begin growing and form normal ovulatory follicles, thus restoring fertility [44]. Effects on growing follicles can, though, have long-term consequences: studies into the effects of chemotherapy on the ovary are providing growing evidence that repeated damage to growing follicles can have a severe effect on the primordial pool, as the loss of growing follicles leads to premature activation of primordial follicles and consequently, a depletion of the primordial follicle pool [24,45–47].

There are several other ways in which chemicals can disrupt oocyte development. During meiotic progression of the oocyte, chromosomes utilise a bipolar spindle for their segregation during both meiotic divisions. If disturbed, this will likely lead to impairment in chromosome pairing or spindle formation, resulting in non-disjunction [48]. Regulation of progression of the cell cycle is tightly controlled by feedback mechanisms that sense disturbances



**Table 2**  
Overview of associations between EDCs and female reproductive dysfunction.

Chemical	Effect	Species	References
Bisphenol A (BPA)	Disturbances in spindle formation and chromosome alignment	Mouse	[51,53]
	Multioocyte follicles	Mouse	[57]
	Increased length of estrous cycle	Mouse	[68]
	Cessation of estrous cycle	Rat	[69]
Cyclophosphamide (Cy)	Disrupted ovarian folliculogenesis and altered steroid production	Rat	[70]
	Decreased E2 levels in plasma and reduced uterine weight	Mouse	[71]
	Destruction of antral follicles	Mouse	[72]
	Reduced ovarian follicle numbers	Mouse	[41]
Cadmium	Reduced germ cell population, retarded germ cell migration and poor gonadal development	Mouse	[73]
Diethylstilbestrol (DES) estrogenic	Girls exposed <i>in utero</i> had increased cervico-vaginal cancers, decreased fertility and POI.	Human	[74–76]
	Meiotic spindle defect in Meiosis II	Mouse	[50]
	Neonatal exposure results in the absence of corpora lutea, hypertrophy of interstitial ovarian tissue and haemorrhagic cysts	Mouse	[77]
	Perinatal exposure induces polyovular follicles	Mouse	[78]
Genistein	Neonatal exposure causes prolonged and abnormal cycles in adult animals	Mouse	[79]
	Neonatal exposure causes dysfunction of post-pubertal reproductive performance and abnormal development of female gonads	Rat	[56]
	Reduced progesterone synthesis	Porcine	[80]
Methoxychlor (MXC)	Inhibition of folliculogenesis and increased AMH production in ovary	Rat	[81]
	Inhibited implantation and delayed embryogenesis	Mouse	[82]
	Suppressed LH surge and irregular estrous cycles	Rat	[83]
	Decreased sex steroid hormone levels	Mouse	[84]
Phthalates (DEHP/MEHP/BBP)	Prolonged estrous cycles, reduced serum estradiol levels and absence of ovulation	Rat	[85]
	Increased estradiol and progesterone production, leading to mid-gestation abortions	Rat	[86]
Polychlorinated biphenyls (PCBs) Trichlorfon (TCF)	Increased blastocyst loss	Rabbit	[87]
	Meiotic delay, nondisjunction and polyploidy	Mouse	[19,88]

and by checkpoint controls that protect the cell from such errors and ensure that aneuploidy is prevented [49]. Failure during these meiotic checkpoints can result in meiotic errors, and the resulting mutations introduced to the genetic material have the potential to be passed on to the subsequent generation. Studies have been carried out on the possible effect of environmental chemicals on different stages of meiosis, including chromosome synapsis, recombination events and chromosome segregation [50,51]. These studies illustrated that environmentally relevant doses of bisphenol A (BPA) and DES have the ability to interfere with the actions of oestrogen receptors (ERs) [52] and cause abnormalities in the alignment of chromosomes and spindle formation [50,53]. Estradiol (E2) inhibits germ cell nest breakdown and protects oocytes from programmed cell death. Germ cell nest breakdown is an important process and may contribute to elimination of germ cells with genetic anomalies [54]. Endocrine disrupting chemicals are likely to interfere with this process, and studies looking at the actions of E2, progesterone and genistein on the newborn rodent ovary found that they all inhibit cyst breakdown, with binuclear oocytes and multioocyte follicles (MOFs) reported as a result of EDC exposure [55]. MOFs are often used as an indicator of an adverse effect, as they are considered a likely result of disruption to germ cell nest breakdown [31,55–60]. Although the vast majority of oocytes affected by chemicals are likely to end up becoming atretic [61], some might form aneuploid ovulated oocytes, with the consequent potential of an aneuploid embryo and likely miscarriage.

Reproductive toxicants might either target the oocyte specifically, or have more general effects on the surrounding somatic cells. In either scenario, reproductive disorders can occur. The follicle is a complex structure relying on interactions between the oocyte and its somatic cells [62–66]. Granulosa and theca cells are responsible for hormone production within the ovary as well as controlling the release of oocytes throughout the adult reproductive lifespan. This is mainly regulated through the expression of autocrine and paracrine factors, creating intricate feedback loops within the follicle that are essential for normal follicle development

and for meiotic competence of the oocyte. Due to this complex communication network formed by the oocyte, granulosa cells and theca cells, together driving follicle development, a chemical affecting any one of these components will affect the whole follicle [64]. These chemicals can also interfere with the feedback loop between the ovaries and pituitary gland to perturb the balance of the hypothalamic–pituitary–gonadal axis. Disruption can, therefore, not only have negative effects on follicle development, oocyte maturation and ovulation, but also significantly impair fertility by affecting the production of ovarian hormones [67].

### 3. *In vitro* culture systems as a tool for studying reproductive toxicology

Over the last half century, various culture methods have been developed with the aim of growing follicles from an immature state to fully mature, fertilizable oocytes [89–98]. These cultures have become a widely used tool to study the development of follicles in reproductive biology and toxicology and have been successfully established in mouse, rat, cattle, sheep, pig, primates and humans [99–104]. In 1989, the first successful *in vitro* pre-antral follicle culture in rodents was carried out, leading to the birth of live pups from these cultured pre-antral follicles [90]. Subsequently, many *in vitro* cultures have been designed with the aim of growing individual follicles, or whole ovaries, at varying stages of development. These cultures include short- and long-term methods, individual pre-antral follicle cultures, granulosa cell–oocyte complexes, co-cultures and whole ovary cultures, depending on the endpoints required for the study [90,105]. Cultures spanning earlier stages of ovary development have proven more challenging, and although a few studies have managed to create the culture conditions necessary to produce live pups from immature cultured follicles [91,92,94,95,98,106], achieving this using cultured oocytes from a pre-meiotic stage has, to-date, been unsuccessful without major manipulation of the follicles [94]. The details of each culture system are outside the scope of this review, but for extensive

reviews on commonly used culture systems see for example one of: Hartshorne [107], Murray and Spears [105], Devine et al. [108], or Picton et al. [109].

*In vitro* ovary and follicle culture models allow for the possibility of varying culture parameters in a highly controlled manner, and thus have the potential to allow a more thorough evaluation for reproductive toxicity studies than do *in vivo* studies alone. Potential endpoints include studying the mechanisms of action of toxicants and how they contribute to oocyte or somatic cell damage, analysis of oocyte quality, effects on the establishment of the primordial follicle pool, and paracrine interactions [110]. Culture systems have the potential to reveal whether the effects of the toxicants directly affect the ovary, with effects observed *in vivo* but not *in vitro* are presumably indirect. The cultures can also reveal whether compounds target follicles at specific stages of development and enable deeper insight into the way toxicants might affect the chromosomal integrity of the oocyte, or if they have the ability to alter hormonal signalling within and/or between follicles.

The culture methods available for toxicological research vary in terms of species, follicle stage, time-course, and composition of culture media. Each culture system has its own pros and cons, all requiring careful consideration before choosing the best method for a toxicology study.

### 3.1. Embryonic ovary culture

The majority of available culture systems involve the post-natal ovary and germ cells that have already entered meiotic arrest, but the foetal stage of reproductive development is a crucial and sensitive period. It includes migration of germline stem cells, their proliferation, and subsequent entry into the first meiotic division, together with proliferation and differentiation of the somatic compartment and the interaction between the germ and somatic cells. Pre-meiotic germ cells, not enclosed in follicles may well be directly responsive to chemicals, making foetal development a particularly vulnerable period [41,111]. A culture system whereby embryonic mouse ovaries, containing oogonia undergoing the first meiotic division, can be cultured intact would have the potential to provide an important contribution to the field of reproductive toxicology, particularly as aneuploidy predominantly occurs during the first meiotic division of oocytes [112–114]. Although the development of rodent oocytes from pre-meiotic foetal germ cells has been attempted [3,89,93,115–118], there has been relatively little success in culturing them through both meiotic divisions to produce mature oocytes, other than through the use of invasive techniques such as nuclear transfer [94]. An embryonic culture technique has the potential to be a great contribution to the field of reproductive toxicology testing, due its capacity to demonstrate direct effects of compounds on the foetal ovary, proliferation, entry into meiosis and the establishment of primordial follicle pool and early stages of developing follicles.

### 3.2. Rodent neonatal ovary culture

In rodent ovaries, primordial follicle assembly occurs around the time of birth. Abnormalities in primordial follicle formation and growth could potentially lead to reproductive problems later in life, such as POF and infertility. The process of follicle formation and the subsequent initiation of follicle growth are two separate processes both covered by the culture of neonatal rodent ovaries [108]. The neonatal ovary culture involves culturing of a whole rodent ovary from after birth for up to 20 days [91,92,95,119,120]. It is an appropriate culture system for studying the biology of primordial follicle assembly and the primordial-to-primary follicle transition, and is

thus a valuable asset to toxicological research to identify potentially hazardous compounds that could interfere with these processes.

### 3.3. Follicle or cumulus–oocyte–complex cultures

For culture of individual follicles, the required follicles are isolated from their surrounding stroma and cultured to allow examination of growth, development and metabolism away from systemic influences. Whole pre-antral follicles can be isolated from the ovaries of immature rodents and are able to survive in culture for up to 12 days, growing from early pre-antral stages to large Graafian follicles which can then be ovulated *in vitro* [91,104,110,121]. This culture system has yielded live pups from cultured pre-antral follicles [91] and is an important culture system for toxicology, as not only does it span the second meiotic division of the oocyte, but it also covers the entire antral stage of follicle development, including ovulation. It also allows for more detailed investigation into the paracrine interactions between the oocyte and the surrounding somatic cells and can also be used to examine interactions between follicles [66,122,123].

## 4. Comparison of *in vivo* and *in vitro* effects of pharmaceuticals and EDCs

As outlined above, chemicals that are suspected to have endocrine disrupting properties include plasticisers (BPA, phthalates, alkylphenols), polychlorinated biphenols (PCBs), organochlorine pesticides (DDT and MXC), flame retardants, parabens, perfluorinated compounds, synthetic hormones used as pharmaceutical drugs as well as the naturally occurring endocrine active substances, such as isoflavones. Despite several cases where environmental toxicants are thought to have influenced reproductive function in various wildlife species [124], as well as a number of *in vivo* exposure studies showing a potential link between environmental compounds and reproductive abnormalities [14,22,27,35,125,126], it remains difficult to prove a causal relationship. Regardless, environmental toxicants are still viewed as contributing factors to diseases that are oestrogen-dependant, including breast cancer and endometriosis [26,127]. Recent *in vitro* research on laboratory animals also strongly point towards the ability of different chemicals to affect the reproductive systems [27,128–133]. This section focuses on a selected number of compounds for which there are data on their effects on the female reproductive system from both *in vitro* and *in vivo* studies. It concentrates more on environmental compounds because they constitute the largest component of chemicals with reported reproductive effects *in vivo* and *in vitro*, with less data available on pharmaceutical compounds, aside from the few chemotherapy agents that have reported effects *in vivo* and *in vitro*.

### 4.1. Pharmaceutical compounds

#### 4.1.1. Cyclophosphamide (Cy)

Cy is a commonly used chemotherapeutic agent with well-recognised ovarian toxicity including follicle destruction and lowered ovarian oestrogen production [72]. Cy causes intra- and inter-strand DNA cross-linking, thereby interfering with cell division. With increasing success of cancer treatments, there are growing concerns about the long-term side effects of alkylating agents such as cyclophosphamide on female reproductive function. There are not many studies using animal models on the reproductive effects of cyclophosphamide, but the ones that have been carried out both *in vivo* and *in vitro* report very similar effects (Table 3), namely, Cy results in a reduced total follicle reserve. To

**Table 3**  
Comparison of *in vivo* and *in vitro* effects of cyclophosphamide on the ovary.

Effect of Cy	<i>In vivo</i>			<i>In vitro</i>		
	Study	Species	Paper	Study	Species	Paper
↓ total follicle reserve	i.p. treatment for 20 days Single i.p. treatment of Cy Pregnant females received a single i.p. injection on E10.5 and E11.5	Rat (SD) Mouse (Balb/c) Mouse (L1 or 129)	[134] [136] [41]	8 day culture of PND4 ovaries with Cy metabolites	Mouse (CD1)	[135]
↑ apoptosis Altered steroidogenesis Failed fertilisation and implantation	i.p. treatment for 20 days i.p. treatment for 20 days 6–7 week old females injected (i.p.) with Cy	Rat (SD) Rat (SD) Mouse (Balb/c)	[134] [134] [137]	8 day culture of PND4 ovaries with Cy metabolites	Mouse (CD1)	[135]

i.p., intraperitoneal; SD, Sprague Dawley; PND, post-natal day.

the best of our knowledge, no *in vitro* studies have investigated the effect of Cy on steroidogenesis or on fertilisation rates.

#### 4.1.2. Diethylstilbestrol (DES)

DES is a non-steroidal synthetic compound functionally similar to natural estradiol but with stronger bioactivity, and high affinity to ER $\alpha$  (ESR1) [138]. It was first synthesised in 1938 and was then prescribed to women between the 1940s and early 1970s as it was believed to reduce the risk of spontaneous abortions and other pregnancy-related complications. It was also thought to improve pregnancy outcome by increasing production of placental steroid hormones [139]. DES was in later years shown to cause reproductive abnormalities in the daughters born to these women, including the otherwise rare clear cell adenocarcinoma of the vagina and cervix [140]; DES was finally banned in 1971 [141]. There are many gaps in the literature where no equivalent *in vitro* studies have been carried out alongside *in vivo* studies, and *vice versa*. However, in the few instances where there has been overlap, the *in vivo* and *in vitro* studies show consistent results, namely demonstrating an increasing incidence of polyovular follicles in mice exposed to DES (Table 4). *In vivo* and *in vitro* studies have not always given consistent results, though, with one study by Karavan [60] finding that DES decelerated follicular development *in vivo*, whereas

other *in vivo* studies by Wordinger [142] and Rivera [59] found the opposite effect.

#### 4.1.3. Doxorubicin

Doxorubicin (DXR) is an anthracycline chemotherapy agent used to treat a variety of cancers including lymphomas, sarcomas, as well as breast and ovarian cancer. It is thought to intercalate with DNA to prevent replication and transcription, partly by inhibiting topoisomerase II, although its precise mechanism remains unknown [24,144]. Studies into the effect of DXR on the ovary have reported a large dose-dependent rise in the number of double-strand DNA breaks in both oocytes and granulosa cells of the ovary. Stromal and vascular damage have also been reported in exposed ovaries, indicating induction of premature ovarian ageing not only through damage to the germ cells but also *via* the somatic components of the ovary [47,145]. Several papers have reported the effects of DXR on the ovary *in vivo*, and many of their results have been supported by *in vitro* studies, such as increased apoptosis of follicles and increased stromal damage of exposed ovaries (Table 5).

#### 4.2. Plasticisers

##### 4.2.1. Bisphenol A (BPA)

BPA is a weak environmental oestrogen whose effects have generated considerable controversy over the last few years. It

**Table 4**  
Comparison of *in vivo* and *in vitro* effects of diethylstilbestrol on the ovary.

Effect of DES	<i>In vivo</i>			<i>In vitro</i>		
	Study	Species	Paper	Study	Species	Paper
Accelerated follicular development	Pregnant mice at E15.5 injected (s.c.). F1 females collected at PND7 s.c. injections between PND1 and 14	Mouse	[142]			
		Sheep	[59]			
Slowed follicular development	Daily injections (s.c.) on PND1–4. Ovaries collected on PND5 Neonatal mice injected (s.c.) on PND0–1	Mouse (CD1)	[60]			
		Mouse (C57BL/6J)	[55]			
Meiotic defects				Exposure of COCs during meiosis-I and meiosis-II spindle formation	Mouse (Balb-C)	[50]
Altered cyst breakdown	Daily injections (s.c.) on PND1–4. Ovaries collected on PND5	Mouse (CD1)	[60]			
↓ cell death	Neonatal mice injected (s.c.) on PND0–1	Mouse (C57BL/6J)	[55]			
↑ polyovular follicles	Neonatal mice injected (s.c.) on PND0–1 s.c. injections for 5 days from PND0	Mouse (C57BL/6J)	[55]	PND0 ovaries cultured with DES for 5 days and transplanted under the renal capsule for 30 days	Mouse (C57BL/Tw)	[143]
		Mouse (ICR/Jcl)	[57]			
↓ Estradiol and testosterone levels				PND14 ovaries collected, follicles isolated and cultured with DES	Rat (SD)	[138]

COCs, cumulus–oocyte complexes; PND, post-natal day; s.c., subcutaneous; SD, Sprague Dawley.

**Table 5**  
Comparison of *in vivo* and *in vitro* effects of doxorubicin on the ovary.

Effect of DXR	<i>In vivo</i>			<i>In vitro</i>		
	Study	Species	Paper	Study	Species	Paper
↑ apoptosis of follicles	Four week old mice treated with DXR	Mouse (CD1)	[146]	GV oocytes cultured with DXR for 20 min	Mouse (ICR)	[47,147]
	Single i.v. injection of DXR. Ovaries collected 24 h later.	Mouse (B6D2 and FBV)	[145]	Ovarian cortical pieces cultured for 24–72 h with DXR	Human	[145]
↓ ovarian size/weight	7–8 week old females injected (i.p.) and ovaries collected 1 day or 1 month later	Mouse (ICR)	[23]			
↓ population of secondary and primordial follicles	7–8 week old females injected (i.p.) and ovaries collected 1 day or 1 month later	Mouse (ICR)	[23]	Ovarian cortical pieces cultured for 24–72 h with DXR	Human	[145]
	Mice xenografted with human ovarian tissue and dosed	Human	[145]			
Stromal damage	Mice xenografted with human ovarian tissue and dosed	Human	[145]	Ovarian cortical pieces cultured for 24–72 h with DXR	Human	[145]

GV, germinal vesicle; i.p., intraperitoneal; i.v., intravenous; s.c., subcutaneous; COCs, cumulus–oocyte complexes; SCID, severe combined immunodeficiency; SD, Sprague Dawley; PND, post-natal day.

**Table 6**  
Comparison of *in vivo* and *in vitro* effects of BPA on the ovary.

Effect of BPA	<i>In vivo</i>			<i>In vitro</i>		
	Study	Species	Paper	Study	Species	Paper
↑ recruitment of PMFs	s.c. injections on PND 1, 3, 5 and 7. Ovaries collected on PND8	Rat (Wistar)	[158]			
Meiotic defects	Females exposed <i>in utero</i> (E11.5–E18.5). Ovaries collected at E18.3, PND28	Mouse (C57BL/6)	[52]	Chronic exposure to growing pre-antral follicles in culture	Mouse (C57BL/6j × CBA/Ca)	[131]
	s.c. injections between PND1 and 14. Ovaries collected on PND30	Sheep	[59]	BPA exposure of COCs during meiosis-I and the formation of meiosis-II spindle	Mouse (Balb/c)	[159]
	Females treated with oral doses of BPA for 6–8 days preceding oocyte collection on PND28	Mouse	[51]	Oocytes isolated from antral follicles exposed during <i>in vitro</i> maturation	Mouse (MF1)	[53]
	Pregnant females exposed BPA during GD 50–100. Ovaries collected at GD 100	Rhesus monkey	[160]			
Delayed cyst breakdown/MOFs	Injections (s.c.) between PND1 and 4. Ovaries collected on PND5	Mouse (CD1)	[60]	Newborn ovaries cultured 3 days with BPA	Mouse (CD1)	[161]
	Injections (s.c.) between PND1 and 4. Ovaries collected on PND5	Sheep	[59]			
	Newborns received 5 daily s.c. injections and ovaries collected at PND40 and 90	Mouse (ICR/Jcl)	[57]			
	Pregnant females treated with BPA. F1 pups collected at PND 3, 5, 7	Mouse (CD1)	[118]			
	Pregnant females exposed during third trimester (GD100–term)	Rhesus monkey	[160]			
Altered steroidogenesis	<i>In utero</i> exposure through drinking water of pregnant females from day 6 of pregnancy	Rat (SD)	[69]	Granulosa cells cultured with BPA for 48 h	Porcine	[162]
	Females exposed daily from gestation day 6 until labour (gavage), followed by dosage of pups from PND1 until PND90	Rat (SD)	[163]	Theca-interstitial cells and granulosa cells cultured with BPA	Rat (SD)	[164]
				Granulosa cells cultured for 72 h with BPA	Porcine	[165]
↑ apoptosis and oocyte loss	s.c. injections between PND1 and 4. Ovaries collected on PND5	Mouse (CD1)	[60]	Granulosa cells cultured with BPA	Mouse (B6C3F1)	[166]

GV, germinal vesicle; i.p., intraperitoneal; s.c., subcutaneous; COCs, cumulus–oocyte complexes; SD, Sprague Dawley; PND, post-natal day.



**Table 7**  
Comparison of *in vivo* and *in vitro* effects of MEHP on the ovary.

Effect of MEHP	<i>In vivo</i>			<i>In vitro</i>		
	Study	Species	Paper	Study	Species	Paper
Inhibited follicle growth. Reduced number of antral follicles and/or CL	Adult females were dosed daily by gavage for 1–12 days	Rat (SD)	[85]	Pre-antral follicles cultured individually for 10 days in MEHP	Rat	[173]
				Antral follicles cultured with MEHP for 96 h	Mouse (CD1)	[174]
				Pre-antral follicles from PND14 rats cultured for 48 h with MEHP	Rat (SD)	[133]
				Antral follicles cultured with MEHP for 24–96 h	Mouse (CD1)	[175]
↑ number of mature follicles	Pregnant females exposed <i>via</i> oral gavage to MEHP. Females in litter collected on first day of estrous cycle	Mouse (C57/Bl6)	[172]			
↑ atretic antral follicles	Pregnant females received daily doses of DEHP by gavage from day 6 p.c. to lactation day 21	Rat (Wistar)	[176]			
Suppressed estradiol production in granulosa cells of pre-ovulatory follicles	Adult females were dosed daily by gavage for 1–12 days	Rat (SD)	[85]	Granulosa cells from adult rat ovaries cultured with MEHP for 48 h	Rat (Fisher 344)	[177]
				Antral follicles cultured with MEHP for 96 h	Mouse (CD1)	[174]
				Granulosa cells cultured with MEHP	Human	[178]
				Pre-antral follicles from PND14 rats cultured for 48 h with MEHP	Rat (SD)	[133]
Increased estradiol levels in serum	Pregnant females exposed <i>via</i> oral gavage to MEHP. Females in litter collected on first day of estrous cycle	Mouse (C57/Bl6)	[172]			
Reduced aromatase expression	Pregnant females exposed <i>via</i> oral gavage to MEHP. Females in litter collected on first day of estrous cycle	Mouse (C57/Bl6)	[172]	Granulosa cells from adult ovaries cultured with MEHP for 48 h	Rat (Fisher 344)	[177]
				Granulosa cells cultured with MEHP	Human	[178]

SD, Sprague Dawley; PND, post-natal day; p.c., post-coitum.

was formulated around the same time as DES but was considered less potent. Exposure to BPA is ubiquitous, because it is used in combination with other chemicals in the manufacturing of polycarbonate plastic and resins and is one of the highest-volume chemicals produced worldwide [148,149]. BPA is used in the manufacturing of polycarbonate, epoxy and corrosion resistant polyester-styrene resins used to make food containers, tableware, dental sealants and the lining of food cans [150,151]. Due to the ester bonds in BPA-based polymers, they are subject to leaching which increases environmental exposure [152,153]. Analysis of human urine samples in the United States has shown that BPA is present in around 95% of urine samples (>0.1 ng/ml) [154] and since BPA is rapidly metabolised [155], this implies that humans are continuously exposed to BPA probably through more than one source. Relationships between the degree of BPA exposure and ovarian dysfunction, such as polycystic ovary syndrome [156] and recurrent miscarriage [157] have been suggested. BPA is also a selective ER modulator (SERM) and several studies have demonstrated its endocrine disrupting actions in both *in vivo* and *in vitro* (Table 6). Studies that have investigated the effects of BPA both *in vitro* and *in vivo*, have overall reported consistent effects: an increase in meiotic defects, especially at higher doses, altered steroidogenesis, delayed cyst breakdown and increased apoptosis in BPA exposed females/cultured ovaries [52,131,158]. Within that, there is some discrepancy to the exact details of the meiotic defects where some studies report aneuploidy following BPA exposure [51,52] whereas

another study reports no aneuploidy, but an induction of meiotic arrest [53].

#### 4.2.2. Mono(2-ethylhexyl)phthalate (MEHP)

The plasticiser MEHP is the major active metabolite of DEHP, the most abundantly produced phthalate ester and the most potent reproductive toxicant of the phthalates [167]. Phthalates are used in the manufacturing of products such as packaging materials, food wraps, medical devices including tubing, blood bags and disposable medical examination gloves, and children's toys to increase their flexibility [167]: over time, phthalates can leach from the plastic. Due to their lipid-soluble and volatile nature, they are ubiquitous environmental contaminants and humans are daily exposed to phthalates from a wide variety of sources [168]. MEHP can cross the placenta, and it is therefore possible that effects might occur from exposure *in utero*. A group of factory-working women who were chronically exposed to phthalates were shown to have increased numbers of miscarriages and decreased pregnancy rates [169]. A later study carried out on pregnant women living near a plastic manufacturer also found a correlation between the phthalate levels in their urine and pregnancy complications [170]. Mother and foetus may also be exposed to DEHP through every-day beauty and consumer products [167]. In 2005, the European Union banned phthalates with potential reproductive toxicity in all toys and childcare objects [171]. Studies carried out on the effects of MEHP on the pre- and post-natal ovary suggest that phthalates can induce

**Table 8**  
Comparison of *in vivo* and *in vitro* effects of DDT on the ovary.

Effect of DDT	<i>In vivo</i>			<i>In vitro</i>		
	Study	Species	Paper	Study	Species	Paper
↑ expression of VEGF, Flk-1 and IGF-1	Females treated with DDE at PND28 and 31. Ovaries collected at PND50	Rat	[186]	Granulosa cells treated after 72 h in culture for 24 h with DDE	Human	[186]
↑ progesterone synthesis				Granulosa cells cultured with DDE	Porcine	[187]
↓ progesterone synthesis				Granulosa cells from pre-pubertal gilts cultured with DDE for 48 h	Porcine	[188]
				Granulosa cultured with DDE for 24 h	Porcine	[189]
↑ proliferation of granulosa cells				Granulosa cells from pre-pubertal gilts cultured with DDE for 48 h	Porcine	[188]

PND, post-natal day.

adverse responses in females at all stages of development, with *in vivo* and *in vitro* studies reporting consistent results, namely that the main effect in adult females is suppressed estradiol production by the ovary, most likely through suppression of aromatase activity (Table 7). A few studies reported opposite findings, for example, Moyer and Hixon [172] reported that PND56 females exposed *in utero* had elevated serum estradiol levels (as opposed to the majority of findings that reported reduced estradiol levels). However, estradiol levels in the same females were significantly reduced compared with controls by PND365.

#### 4.3. Organochlorine pesticides

##### 4.3.1. Dichlorodiphenyltrichloroethane (DDT)/dichlorodiphenyldichloroethylene (DDE)

DDT is used in a variety of agricultural fertilizers, household insecticide sprays and parasitic medications. It has the ability to persist in the environment and accumulate in the food chain [179]. It has been reported to result in reproductive abnormalities in wildlife, with a strong association found between dichlorodiphenyldichloroethylene (DDE), the most persistent metabolite of DDT, and egg shell thinning in predatory birds [180]. Exposure of female rabbits to DDT has been reported to lead to decreased fertilisation rate as well as pre- and post-implantation embryonic loss [87]. DDE is ubiquitous and can be found in various human tissues, as well as serum and follicular fluid [181–183], suggesting that DDE has direct access to the oocyte. Higher DDE levels in follicular fluid of women undergoing IVF were associated with lower fertilisation rates [183], although the precise mechanism through which DDE affects the ovary is unknown. Another study suggested an association between DDE and polycystic ovary syndrome (PCOS) [184]. Even though the use of DDT was discontinued in North America in 1972, it is still used, e.g., in Mexico as a way of controlling malaria, and therefore is still able to enter the environment [185]. The only study into both *in vitro* and *in vivo* effects of DDT on the ovary reported increased VEGF, Flk-1 and IGF-1 expression following treatment. Another study reported an increased proliferation of granulosa cells, but several *in vitro* studies looking at progesterone synthesis do not report consistent effects (Table 8).

##### 4.3.2. Methoxychlor (MXC)

MXC is an insecticide that was developed to replace DDT as it is considered less toxic [130,190], none-the-less, it has been found to affect the reproductive system at all stages of development [191]. It is metabolised to mono-hydroxy MXC in the body [192], and ovaries of adult mice exposed to MXC have been reported to contain higher

numbers of large atretic follicles, and have lower weight than control ovaries [191]. It has been debated whether these pesticides (MXC/DDT) have the ability to impair fertility by directly acting on the ovaries and affecting the meiotic progression of oocytes, or whether they affect fertility indirectly due to action on the genital tract [193]. *In vivo* and *in vitro* studies on the effects on MXC have produced consistent results (Table 9), reporting reduced follicle growth and increased follicle atresia. This consistency between *in vivo* and *in vitro* studies strongly indicates that the effects are direct.

#### 4.4. Occupational chemicals

##### 4.4.1. 4-Vinylcyclohexene diepoxide (VCD)

VCD is an occupational chemical, an epoxide metabolite of 4-vinylcyclohexene (VCH). The VCH family of compounds are occupational-hazard chemicals released into the environment at low concentrations as by-products of the synthesis of plasticisers, flame retardants and rubber. VCD has been shown to selectively deplete the rodent ovary of primordial and primary follicles [197,198]. Daily treatments of VCD in mice and rats results in primordial and primary follicle depletion, greatly reducing the number of follicles that can be recruited for the formation of antral follicles, thus subsequently affecting E2 secretion [199]. However, only rodents are able to metabolise VCH to its active form VCD, and since human exposure to VCH and its metabolites is minimal, VCH has been considered as a model toxicant for reproductive toxicology studies and for studying their effects on primordial follicle loss [200]. All studies on the effects of VCD on the ovaries, *in vitro* and *in vivo*, report consistent results: reduced numbers of pre-antral follicles and an increase in apoptosis (Table 10).

##### 4.4.2. Polychlorinated biphenyls (PCBs)

PCBs are pollutants that were generated on a large scale commercially until their production was banned in the 1970s [203]. PCB contamination was first detected when environmental samples were being screened for DDT and other environmental compounds [204]; they have since been detected in the environment worldwide. They are also used in the industrial community due to their stable and lipophilic properties [205]. This adds to their persistent contamination in the environment, since they can accumulate in food chains [35]. Furthermore, due to their lipophilic properties, they can accumulate in adipose tissues, breast milk and are able to cross the placenta. This means that the offspring can be exposed to high concentrations of PCBs during pre- and post-natal development [206]. PCBs and their congeners have been shown to affect the reproductive system of several species [35]. One of the congeners,

**Table 9**  
Comparison of *in vivo* and *in vitro* effects of MXC on the ovary.

Effect of MXC	<i>In vivo</i>			<i>In vitro</i>		
	Study	Species	Paper	Study	Species	Paper
↓ follicle growth/↓ antral follicles	Females received daily s.c. injections of MXC	Rat (SD)	[81]	Antral follicles from PND30 to 35 females were cultured for 96 h with MXC	Mouse (C57BL/6)	[129]
				Antral follicles were cultured for 96 h with mono-OH	Mouse (CD1)	[192]
↑ AMH positive follicles	Female rats received daily s.c. injections of MXC	Rat (SD)	[81]			
↑ follicle atresia	Females received MXC by oral gavage for 14 days	Rat	[194]	Antral follicles from PND30 to 35 females were cultured for 96 h with MXC	Mouse (C57BL/6)	[129]
	Females received daily i.p. MXC injections for 20 days	Mouse (CD1)	[195]			
	Neonatal females received 14 daily i.p. injections of MXC. Ovaries collected at 3, 6 and 12 months	Mouse (ND4 Swiss Webster)	[196]			
↓ progesterone synthesis				Granulosa cells from pre-pubertal gilts were collected and cultured for 48 h with MXC	Porcine	[188]
				Granulosa cells were exposed to MXC for 24 h	Porcine	[189]

i.p., intraperitoneal; s.c., subcutaneous; SD, Sprague Dawley; PND, post-natal day.

3,3',4,4'-tetrachlorobiphenyl (TCB), is believed to act as an ovarian toxicant through AhR-binding and consequently altering steroidogenic pathways in the ovary [35].

Few *in vitro* studies have been carried out on the effects of PCBs on the ovary, therefore the only correlation between *in vitro* and *in vivo* studies relates to examining the effects on meiotic division of oocytes, with a decreasing percentage of oocytes reaching metaphase II when ovaries were exposed to PCBs, demonstrated *in vivo* in the mouse model and *in vitro* in the bovine model (Table 11). Other findings, such as decreased ovary weight, increased follicle atresia and decreased follicle numbers show consistency between *in vivo* experimental approaches.

#### 4.5. Phyto-estrogens

##### 4.5.1. Genistein

Genistein is a naturally occurring isoflavone found in soy, with the main human route of exposure through the consumption of soy products or soy-based infant formula [35]; it is also taken as a form of hormone replacement therapy by post-menopausal women. It has received much scientific interest since it was discovered that it had a negative effect on fertility in ewes [213]. Genistein has been shown to have weak estrogenic and anti-estrogenic properties and to induce cell differentiation [214]. Its actions are thought to result

mainly from binding to ERs due to structural homology with E2 [215]. There are only two studies that appear to find similar effects *in vitro* and *in vivo*, with both studies finding that germ cell nest breakdown was inhibited when neonatal mouse ovaries were exposed to genistein: other effects have all been reported in only one model (Table 12).

#### 5. Comparison of results from *in vivo* and *in vitro* studies

Despite a wide range of study designs, which can vary in terms of species, dosage routes and concentrations, timing and duration of exposure, as well as whether single or repeated doses of compounds are used, there are a substantial number of *in vitro* studies showing near-identical effects to those found *in vivo* (Table 13). There are however, instances where different effect/s are observed, either between *in vivo* and *in vitro* studies, or despite the similarity in the model used (Table 14). Possible explanations include the compound having off target effects that could lead to a secondary effect on the ovaries *in vivo* but not *in vitro*. Alternatively, the effects of a compound might not follow a normal dose–response relationship; exposure to a compound at a low dose can have a different, even a more significant effect on the ovaries, than exposure to higher concentrations [162,196]. Thus, low concentration of BPA stimulated granulosa cell E2 production, whereas it

**Table 10**  
Comparison of *in vivo* and *in vitro* effects of VCD on the ovary.

Effect of VCD	<i>In vivo</i>			<i>In vitro</i>		
	Study	Species	Paper	Study	Species	Paper
↓ number of primordial, primary and secondary follicles	Daily i.p. injections for 30 days to PND28 females	Rat (F344)	[199]	PND4 ovaries cultured with VCD for 1, 2 or 8 days	Rat (F344)	[132]
	PND28 females received single i.p. injection	Rat (F344)	[128]	PND4 ovaries cultured with VCD for 1 or 15 days	Rat (F344)	[128]
	PND28 females received daily i.p. injections	Rats and mice	[201]			
↑ apoptosis	Daily i.p. injections between PND4 and 19	Rat (F344)	[202]	PND4 ovaries cultured for 15 days with VCD	Rat (F344)	[202]

i.p., intraperitoneal; PND, post-natal day.

**Table 11**  
Comparison of *in vivo* and *in vitro* effects of PCB on the ovary.

Effect of PCB	<i>In vivo</i>			<i>In vitro</i>		
	Study	Species	Paper	Study	Species	Paper
↓ ovary weight	Pregnant females exposed to PCBs. F1 females sacrificed on PND21 or 84	Mouse (CD1)	[203]			
↑ follicular atresia	Pregnant females exposed to PCBs. F1 females sacrificed on PND21 or 84	Mouse (CD1)	[203]			
↓ % of oocytes reaching metaphase II/impaired fertilisation	Pregnant females exposed to PCBs. F1 females sacrificed on PND21 or 84	Mouse (CD1)	[203]	COCs were exposed to Arochlor-1254	Bovine	[207]
↓ follicle numbers	Females received i.p. injections on day 13 p.c. F1 females sacrificed on PND28	Mouse (C57/B1)	[208]			
	Pregnant females injected (i.p.) between 7 and 13 d.p.c. Females sacrificed on PND24/25	Rat (Long-Evans)	[209]			
Altered steroidogenesis				Granulosa and theca cells cultured with PCB126 or PCB153	Porcine	[210]
				Co-cultures of granulosa and theca cells were supplemented with PCB	Porcine	[211]
				Co-cultures of ovarian theca and granulosa cells were exposed for 48 h with PCB	Porcine	[212]

GV, germinal vesicle; i.p., intraperitoneal; s.c., subcutaneous; COCs, cumulus–oocyte complexes; PND, post-natal day.

was inhibited by higher concentrations [162]. Effects of reproductive toxicants can also be time-dependent, with different effects observed between single-dose studies and those where animals received repeated doses [218].

## 6. Regulatory requirements for reproductive toxicological testing

Most countries have statutory bodies regulating the testing of potentially toxic compounds. Agencies such as EFSA (the

European Food Safety Authority), USEPA and FDA (the Food and Drug Administration), were created for the purpose of protecting human health and the environment by providing scientific advice and by communicating on risks associated with the food chain. The pharmaceutical industry also has rigorous regulatory testing requirements, controlled by the EMA (European Medical Agency), FDA (USA) and PMDA (Pharmaceuticals and Medical Devices Agency, Japan). The guidelines are laid out in the core tripartite harmonised guideline issued by the International Conference on Harmonisation of Technical Requirements for Registration

**Table 12**  
Comparison of *in vivo* and *in vitro* effects of genistein on the ovary.

Effect of genistein	<i>In vivo</i>			<i>In vitro</i>		
	Study	Species	Paper	Study	Species	Paper
Lowered or inhibited E2 production				Granulosa cells cultured in presence of genistein	Porcine	[215]
Inhibited P4 production				Granulosa cells cultured in presence of genistein	Porcine	[215]
↓ testosterone and cAMP levels (no effect on E2)				Follicles isolated from PND14 females and cultured for 5 days with genistein	Rat (SD)	[138]
Inhibited nest breakdown	Neonates received s.c. injections of genistein between PND1 and 5	Mouse (CD1)	[30]	Ovaries from PND1 females cultured for 7 days with genistein	Mouse (CD1)	[216]
↑ atretic follicles	Females received s.c. day of genistein from PND18 to 20	Rat (Wistar)	[217]			
↓ follicle numbers	Females received s.c. injections of genistein from PND18 to 20	Rat (Wistar)	[217]			
↑ MOFs	Neonates dosed orally with genistein from PND1 to 5	Mouse (C57BL/6)	[58]			
	Neonates received s.c. injections of genistein	Mouse	[31]			
	Females were dosed orally with genistein from PND1 to 5	Rat (SD)	[56]			

i.p., intraperitoneal; s.c., subcutaneous; SD, Sprague Dawley; PND, post-natal day.

**Table 13**  
Consistent results from comparisons of *in vivo* and *in vitro* experiments.

Comparable results between <i>in vivo</i> and <i>in vitro</i>	Compound	References	
		<i>In vivo</i>	<i>In vitro</i>
↑ number of polyovular follicles	DES	[55]	[143]
Inhibited germ cell nest breakdown	GEN	[30]	[216]
↓ number of pre-antral follicles	VCD	[128,199]	[128,132]
↑ apoptosis	VCD	[202]	[202]
↓ follicle growth and fewer antral follicles	MXC	[81]	[129,192]
↑ follicle atresia	MXC	[194–196]	[129]
Suppressed E2 production in pre-ovulatory follicles	MEHP	[85]	[133,174,177]
Inhibited follicle growth	MEHP	[85]	[130,133,173]
↓ number of antral follicles/CL			
Meiotic defects	BPA	[52,59]	[131,159]
Altered steroidogenesis	BPA	[69]	[131,162,164]
↑ apoptosis	BPA	[60]	[166]
Stromal damage	DXR	[145]	[145]
↑ apoptosis in oocytes	DXR	[145,146]	[145,147]
↑ apoptosis	Cy	[134]	[135]

of Pharmaceuticals for Human Use (ICH) (S5) 1993 which provides guidance on tests for reproductive toxicity [221].

### 6.1. Regulation of pharmaceuticals and agrochemicals

In the pharmaceutical industry the majority of reproductive toxicity testing is carried out *in vivo*. Potential toxic effects on both male and female fertility, foetal and post-natal development must be taken into consideration. Reproductive toxicology testing follows guidelines issued by the ICH as well as by The Organisation for Economic Co-operation and Development (OECD), with the aim of creating standardised reproductive toxicology tests [44,222]. The ICH M3 (S5) guideline contains a description of the testing concept and recommendations, especially those addressing pre-mating treatment duration and suggested observations to assess for reproductive toxicity [221]. It defines the periods of treatment to be used in animals to assess for reproductive risk: fertility, implantation through organogenesis to closure of the hard palate and the pre- and post-natal period through to the end of lactation. This allows specific identification of stages of the reproductive cycle that are at risk following human exposure to medicinal compounds.

Preclinical designs to assess effects of potential toxicants on the pre-natal ovary are fairly similar between pharmaceutical compounds and agrochemicals, but they differ in that pharmaceutical companies analyse effects on long-term outcome, such as pregnancy after exposure *in utero*, whereas agrochemical testing also

includes a more detailed qualitative and quantitative histological assessment of the primordial follicle pool following pre-natal exposure.

### 6.2. Regulation of environmental compounds

In 1996 the U.S. congress, through the Food Quality Protection Act (FQPA) and the Safe Drinking Water Act Amendments (SWDA), directed USEPA to develop a screening system that uses scientifically relevant information to examine whether certain compounds can have hormonal effects in humans. The fertility and reproduction study protocol includes exposure of male and female rodents prior to mating and throughout the mating period. The testing process involves a two-tiered screening system, where the first aims to identify chemicals with the potential to interact with the endocrine system, and the second aims to determine endocrine-related effects caused by each individual chemical, gathering information about their effects at different doses.

In 2013, the Scientific Committee (SC) of EFSA delivered a considered opinion on the existing information relating to the testing and assessment on EDCs. The SC concluded that although a complete range of standardised assays are available to test for endocrine modalities in mammals and fish, although no single assay will provide all the information required to decide whether a substance falls into the ED category. The SC therefore expressed a need to further develop the screens and test methods in order to generate

**Table 14**  
Conflicting results from *in vivo* and/or *in vitro* experiments.

Compound	Effect	Study type	References
Genistein	Lowered PMF numbers	<i>In vivo</i>	[217]
	Increased PMF numbers	<i>In vivo</i>	[219]
DDT	Suppressed progesterone synthesis	<i>In vitro</i>	[188]
	Increased progesterone synthesis	<i>In vitro</i>	[187]
MEHP	Suppressed estradiol production	<i>In vivo</i> and <i>In vitro</i>	[85,133,174,177,178]
	Increased estradiol production	<i>In vivo</i>	[172]
DES	Decelerated follicular development	<i>In vivo</i>	[59,142]
	Accelerated follicular development	<i>In vivo</i>	[55,60]
DES	Increased testosterone levels	<i>In vivo</i>	[220]
	Decreased testosterone levels	<i>In vitro</i>	[138]



**Table 15**  
Pros and cons of *in vivo* compared to *in vitro* studies.

<i>In vitro</i>		<i>In vivo</i>	
Pro	Con	Pro	Con
Highly controlled, <i>i.e.</i> , exposure window, concentration of compound and stage of follicle growth	Will never tell the 'whole story'	Best way of predicting the 'real life' situation	Difficult to assess exactly how much an animal is exposed to through the placenta
Can study a specific follicle type/stage	Do not pick up on effects on the reproductive tract	Can pick up effects on the reproductive tract	Compounds can still be passed through breast milk
Good for assessing direct effects of a compound on the ovary	Do not pick up any effects on the HPG axis	Can pick up detect effects on the HPG axis	Compounds can persist in the animal long after exposure
The only procedure required for the animal is culling for tissue collection	Does not take into account metabolism of chemical	Metabolism can be considered – are compounds being detoxified?	Requires more animal procedures than the <i>in vitro</i> method
Pre-natal testing does not require exposure to an animal that is not of interest to the study	An effect <i>in vitro</i> does not necessarily mean that the same effect will be observed <i>in vivo</i>	Extensive use over decades demonstrates its effectiveness	Pre-natal testing requires exposure to the mother—an animal that may not be of interest for the study
Easier to assess whether it targets germ cells or somatic cells		Can be used with ease to study transgenerational effects	
Allows for higher throughput, including testing of complex chemical mixtures			

sufficient data for identifying and assessing endocrine disrupting properties [223].

### 6.3. Limitations of regulatory testing

Since EDC and pharmaceutical exposure can occur in the form of individual chemicals or as chemical mixtures, it has proven difficult to establish which situation causes more harm to reproductive function, in particular because the effects might not become evident until years later [11]. Furthermore, different periods of vulnerability mean that a foetus might not be affected by a chemical in the same way as an adult, making the testing of such chemicals on reproductive function difficult, yet that much more crucial.

The large majority of regulatory testing outlined above requires *in vivo* experiments, using end-points such as pregnancy, implantation and number of offspring, parameters that do not identify any potential effects on the primordial follicle pool. Consequently, current *in vivo* study designs might not pick up long-term effects on the primordial follicle pool since it may not affect immediate ovulation rates and subsequent pregnancies, but might have longer term consequences on reproductive lifespan. On the other hand it is also possible that an effect seen in the neonatal ovary may, in fact, correct itself in later life [224]. Furthermore, testing of chemicals *in vivo* is time consuming and costly.

To date, *in vitro* models have been used primarily as a preliminary or secondary screening protocol for toxicity testing, but the lack of an alternative test system to available *in vivo* study designs has been commented on Refs. [44,225,226]. Non-mammalian species including zebrafish, frogs, *Caenorhabditis elegans* and yeast have been found useful in regulatory toxicity testing as they offer numerous advantages such as rapid development, ease and cost of maintenance and high fecundity [183,227,228]. However, to date, these models have primarily been used identify the molecular targets of EDCs, to study toxicogenomics, to screen for oestrogen, androgen and thyroid hormone disruption, or for threshold measurements: as such, they are not ideal models for investigating reproductive effects of toxicants and are not accepted models for regulatory testing in the pharmaceutical industry [227,229]. This has led to an increased demand for adequate mammalian *in vitro* models that may be used to gain an insight into the mechanisms of chemical exposure and pinpoint potentially hazardous products on reproductive function. As can be seen in the section above, *in vitro* cultures have made a useful and powerful contribution to the field of reproductive toxicology testing. Not all regulatory works have to be carried out *in vivo* and there is a strong case for considering

*in vitro* testing to replace some of the currently required *in vivo* tests.

## 7. Conclusions

Animals, including humans, are exposed to a very wide range and number of compounds and chemical mixtures in their lifetime. Consequently, it is becoming increasingly crucial to develop and improve the *in vivo* assessments and *in vitro* culture techniques necessary to elucidate the toxic effects of pharmaceuticals and EDCs on the ovary, to allow for faster screening of potential developmental and/or reproductive toxicants. The type and length of analysis chosen for female reproductive toxicology research requires careful consideration. The main pros and cons of *in vitro* compared with *in vivo* studies are outlined in Table 15.

The key point of *in vivo* studies is to assess the potential toxic risk of a drug on the body, when administered at a therapeutic dose. Although this is more representative of the 'real life' situation, it can also be difficult for *in vivo* studies to assess how much is reaching the gonads, since compounds can be detoxified, activated or eliminated in the body. Calculations to determine the amount of compound reaching the gonads are complex and vary between species and life stage. The method of exposure also needs careful consideration as subcutaneous injections and oral ingestions of the same amount of the same compound will not necessarily result in the same ovarian exposure [230,231]. Other issues reproductive toxicologists face when using *in vivo* studies include attempting to limit the duration of exposure to a single dose of compound, since some compounds can, for example, persist in the animal. Exposure of compounds can change due to mobilisation of maternal body reserves during pregnancy [232] or can be passed through breast-milk a long time after the exposure window, making it difficult to predict the precise time and duration of exposure [35,230]. *In vivo* studies often use end-points such as pregnancy, implantation and number of offspring, which are parameters that do not identify the site of action, the mechanism(s) of toxic damage or the effect on the primordial follicle pool. However, female reproductive function requires effective communication between the ovary, the neuroendocrine system, the hypothalamic–pituitary–gonadal (HPG) axis and the reproductive tract, and *in vivo* studies will be able to detect toxic effects on any of these systems, which could result in a secondary effect on the gonads. For example, effects on the oestrogen-dependent endometrium, could subsequently lead to ovary-independent infertility [37,57]. One drawback of *in vitro* studies is, therefore, that, although they can be useful for assessing

direct effects on the ovary, they cannot account for any indirect action that might modulate hormone-signalling pathways such as the HPG axis. Studies carried out *in vitro* are also unable to take metabolism into consideration and care must be taken when examining effects of a compound that has no effect until it has been metabolised. This is the case with DEHP, which is administered *in vitro* as its active metabolite MEHP [167]. Even if a compound has demonstrated interference with receptor binding/hormone production *in vitro*, the same activity may not be observed *in vivo* [233]. Despite this, *in vitro* models such as the ones described in Section 4 are a promising area in toxicology, allowing pragmatic and mechanistic studies of action of reproductive toxicants and are able to reduce the number of animals required for *in vivo* studies. *In vitro* systems are proving to be an invaluable preliminary method to investigate direct effects of potentially harmful compounds because it is practicable to test a very large dose-range from sub-environmental right up to toxicological levels. This holds very true for the female reproductive system, especially where appropriate care has been taken to administer doses that reflect human exposure levels in at least part of the dose–response curve design. Crucially, they require relatively little time to yield precise answers, and can cover various, yet specific, stages of ovary and follicle development. *In vitro* studies allow scientists to examine the precise mechanisms of action of a reproductive toxicant on the different stages of growth and development, as well as to pinpoint whether a specific chemical targets the stroma, the oocyte, the somatic compartment of the follicle, or the follicle as a whole.

To summarise, *in vitro* studies are proving to be an invaluable part of reproductive toxicology, to enable clear analysis of whether a compound acts directly or indirectly on the ovarian follicle. Although they are less useful for studying indirect toxic effects on the reproductive system, they still do have great potential to provide an important preliminary or secondary screening protocol for toxicology testing alongside *in vivo* studies. The combination of *in vivo* and *in vitro* work is a powerful one to detect and understand mechanisms of damage to the ovary, its follicles and oocytes, and their consequence for adult fertility and subsequent generations.

### Conflict of interest

The authors declare that there are no conflicts of interest.

### Transparency document

The [Transparency document](#) associated with this article can be found in the online version.

### Acknowledgements

The author's studies in this field are supported by MRC grants G1002118 (NS and RAA) and G110357 (RAA), MR/L010011/1 (PAF), the European Community's Seventh Framework Programme (FP7/2007–2013) under grant agreement no. 212885 (PAF) and the Wellcome Trust (080388 to PAF). AS was funded by a BBSRC CASE Studentship co-funded by AstraZeneca.

### References

- [1] Baillet A, Mandon-Pepin B. Mammalian ovary differentiation – a focus on female meiosis. *Mol Cell Endocrinol* 2012;356:417–33.
- [2] Anderson LD, Hirshfield AN. An overview of follicular development in the ovary: from embryo to the fertilized ovum *in vitro*. *Md Med J* 1992;41:614–20.
- [3] Adams IR, McLaren A. Sexually dimorphic development of mouse primordial germ cells: switching from oogenesis to spermatogenesis. *Development* 2002;129:1155–64.
- [4] McGee EA, Hsueh AJ. Initial and cyclic recruitment of ovarian follicles. *Endocr Rev* 2000;21(2):200–14.
- [5] Craig J, Orisaka M, Wang H, Orisaka S, Thompson W, Zhu C, et al. Gonadotropin and intra-ovarian signals regulating follicle development and atresia: the delicate balance between life and death. *Front Biosci* 2007;12:3628–39.
- [6] Woodruff TK, Walker CL. Fetal and early postnatal environmental exposures and reproductive health effects in the female. *Fertil Steril* 2008;89:e47–51.
- [7] Bellingham M, Sharpe RM. Chemical exposures during pregnancy: dealing with potential, but unproven risks to child health. RCOG; 2013 [Scientific Impact Paper 37].
- [8] Tiemann U. In vivo and in vitro effects of the organochlorine pesticides DDT, TCPM, methoxychlor and lindane on the female reproductive tract of mammals: a review. *Reprod Toxicol* 2008;25:316–26.
- [9] Birklett JW. Scope of the problem. Endocrine disruptors in wastewater and sludge treatment processes. Boca Raton, FL: Lewis Publishers; 2003.
- [10] Rahman MF, Yanful EK, Jasim SY. Endocrine disrupting compounds (EDCs) and pharmaceuticals and personal care products (PPCPs) in the aquatic environment: implications for the drinking water industry and the global environmental health. *J Water Health* 2009;7(2):224–43.
- [11] Sharpe RM, Irvine D. How strong is the evidence of a link between environmental chemicals and adverse effects on human reproductive health. *BMJ* 2004;328:447–51.
- [12] Propper CR. The study of endocrine-disrupting compounds: past approaches and new directions. *Integr Comp Biol* 2005;45:194–200.
- [13] Fowler PA, Bellingham M, Sinclair KD, Evans NP, Pocar P, Fischer B, et al. Impact of endocrine-disrupting compounds (EDCs) on female reproductive health. *Mol Cell Endocrinol* 2012;355:231–9.
- [14] Petro EML, Leroy JLMR, Van Cruchten SJM, Covaci A, Jorssen EPA, Bols PEJ. Endocrine disruptors and female fertility: focus on (bovine) ovarian follicular physiology. *Theriogenology* 2012;78(9):1887–900.
- [15] Rhind SM. Are endocrine disrupting compounds a threat to farm animal health, welfare and productivity. *Reprod Domest Anim* 2005;40:282–90.
- [16] Gray J, Evans N, Taylor B, Rizzo J, Walker M. State of the evidence (review): the connection between breast cancer and the environment. *Int J Occup Environ Health* 2009;15:43–78.
- [17] Johnson MD, Kenneu N, Stoica A, Hilakiva-Clarke L, Singh B, Ghepkko G, et al. Cadmium mimics the in vivo effects of estrogen in the uterus and mammary gland. *Nat Med* 2003;9(8):2081–4.
- [18] Martino-Andrade AK, Chahoud I. Reproductive toxicity of phthalate esters. *Mol Nutr Food Res* 2010;54:148–57.
- [19] Ranaldi R, Gambuti G, Eichenlaub-Ritter U, Pacchierotti F. Trichlorfon effects on mouse oocytes following in vivo exposure. *Mutat Res* 2008;651:125–30.
- [20] Ishibashi H, Matsumura N, Hirano M, Matsuoka M, Shiratsuchi H, Ishibashi Y, et al. Effects of triclosan on the early life stages and reproduction of medaka *Oryzias latipes* and induction of hepatic vitellogenin. *Aquat Toxicol* 2004;67:167–79.
- [21] Huff J. Carcinogenic bioassays of bisphenol A, 4-vinylcyclohexene diepoxide and 4-vinylcyclohexene. *Toxicol Sci* 2001;64:282–3.
- [22] Uzumcu M, Zachow R. Developmental exposure to environmental endocrine disruptors: consequences within the ovary and on female reproductive function. *Reprod Toxicol* 2007;23(3):337–52.
- [23] Ben-Aharon I, Bar-Joseph H, Tzarfaty G, Kuchinsky L, Rizel S, Stemmer SM, et al. Doxorubicin-induced ovarian toxicity. *Reprod Biol Endocrinol* 2010;8:20.
- [24] Morgan S, Anderson RA, Gourley C, Wallace WH, Spears N. How do chemotherapeutic agents damage the ovary? *Hum Reprod* 2012;18(5):525–35.
- [25] Daston GP, Gooch JW, Breslin WJ, Shuey DL, Nikiforov AI, Fico TA, et al. Environmental estrogens and reproductive health: a discussion of the human and environmental data. *Reprod Toxicol* 1997;11(4):465–81.
- [26] Crain DA, Janssen SJ, Edwards TM, Heindel J, Ho SM, Hunt P, et al. Female reproductive disorders: the roles of endocrine-disrupting compounds and developmental timing. *Fertil Steril* 2008;90(4):911–40.
- [27] Diamanti-Kandaris E, Bourguignon J, Guidice LC, Hauser R, Prins GS, Soto AM, et al. Endocrine-disrupting chemicals: an endocrine society scientific statement. *Endocr Rev* 2009;30:293–342.
- [28] Rochester JR. Bisphenol A and human health: a review of the literature. *Reprod Toxicol* 2013;42:132–55.
- [29] Adewale IR, McLaren A. Sexually dimorphic development of mouse primordial germ cells: switching from oogenesis to spermatogenesis. *Development* 2002;129:1155–64.
- [30] Jefferson E, Newbold R, Padilla-Banks E, Pepling M. Neonatal genistein treatment alters ovarian differentiation in the mouse: inhibition of oocyte nest breakdown and increased oocyte survival. *Biol Reprod* 2006;74:161–8.
- [31] Jefferson E, Padilla-Banks E, Newbold R. Disruption of the female reproductive system by the phytoestrogen genistein. *Reprod Toxicol* 2007;23:308–16.
- [32] Newbold R. Lessons learned from perinatal exposure to diethylstilbestrol. *Toxicol Appl Pharmacol* 2004;199:142–50.
- [33] Swan SH. Intrauterine exposure to diethylstilbestrol: long-term effects in humans. *APMIS* 2000;108(12):793–804.
- [34] Newbold R, Hanson RB, Jefferson WN, Bullock BC, Haseman J, McLachlan JA. Proliferative lesions and reproductive tract tumors in male descendants of mice exposed developmentally to diethylstilbestrol. *Carcinogenesis* 2000;21(7):1355–63.
- [35] Miller KP, Borgeest C, Greenfeld C, Tomix D, Flaws JA. In utero effects of chemicals on reproductive tissues in females. *Toxicol Appl Pharmacol* 2004;198:111–31.

- [36] Bernal AJ, Jirtle RL. Epigenomic disruption: the effects of early developmental exposures. *Birth Defects Res A Clin Mol Teratol* 2010;88:938–44.
- [37] Zama AM, Uzumcu M. Epigenetic effects of endocrine-disrupting chemicals on female reproduction: an ovarian perspective. *Front Neuroendocrinol* 2010;31(4):420–39.
- [38] Anway SD, Skinner MK. Epigenetic transgenerational actions of endocrine disruptors. *Endocrinology* 2006;147(6):S43–9.
- [39] Schneider S, Kaufmann W, Buesen R, Van Ravenzwyg B. Vinclozolin – the lack of a transgenerational effect after oral maternal exposure during organogenesis. *Reprod Toxicol* 2008;25:350–60.
- [40] Inawaka K, Kawabe M, Tahashi S, Doi Y, Tomihara Y, Tarui H, et al. Maternal exposure to anti-androgenic compounds vinclozolin, flutamide and procymidone has no effects on spermatogenesis and DNA methylation in male rats of subsequent generations. *Toxicol Appl Pharmacol* 2009;237:178–87.
- [41] Comish PB, Drummond AL, Kinnell HL, Anderson RA, Matin A, Meistrich ML, et al. Fetal cyclophosphamide exposure induces testicular cancer and reduces spermatogenesis and ovarian follicle numbers in mice. *PLOS ONE* 2014;9(4):e93311.
- [42] Rekhadevi PV, Diggs DL, Huderson AC, Harris KL, Archibong AE, Ramesh A. Metabolism of the environmental toxicant benzo(a)pyrene by subcellular fractions of human ovary. *Hum Exp Toxicol* 2014;33(2):196–202.
- [43] De Vos M, Devroey P, Fauser BCJM. Primary ovarian insufficiency. *Lancet* 2010;376(9744):911–21.
- [44] Cortvrint R, Smits J. Follicle culture in reproductive toxicology: a tool for in vivo testing of ovarian function? *Hum Reprod Update* 2002;8(3):243–54.
- [45] Meirou D, Biederman H, Anderson RA, Wallace WH. Toxicity of chemotherapy and radiation on female reproduction. *Clin Obstet Gynecol* 2010;53:727–39.
- [46] Kalich-Philosoph L, Roness H, Carmely A, Fishel-Bartal M, Ligumsky H, Paglin S, et al. Cyclophosphamide triggers follicle activation and 'burnout': AS101 prevents follicle loss and preserves fertility. *Sci Transl Med* 2013;5:185ra162.
- [47] Morgan S, Lopes F, Gourley C, Anderson RA, Spears N. Cisplatin and doxorubicin induce distinct mechanisms of ovarian follicle loss; imatinib provides selective protection only against cisplatin. *PLOS ONE* 2013;8(7):43–8.
- [48] Fragouli E, Wells D, Delhanty JDA. Chromosome abnormalities in the human oocyte. *Cytogenet Genome Res* 2011;133:107–18.
- [49] Vogt E, Kirsch-Volders M, Parry J, Eichenlaub-Ritter U. Spindle formation chromosome segregation and the spindle checkpoint in mammalian oocytes and susceptibility to meiotic error. *Mutat Res* 2008;651:14–29.
- [50] Can A, Semiz O. Diethylstilbestrol (DES) induced cell cycle delay and meiotic spindle disruption in mouse oocytes during in vitro maturation. *Mol Hum Reprod* 2000;6:154–62.
- [51] Hunt PA, Koehler KE, Susiarjo M, Hodges CA, Ilagan A, Voigt RC. Bisphenol A exposure causes meiotic aneuploidy in the female mouse. *Curr Biol* 2003;13:546–53.
- [52] Susiarjo M, Hassold TJ, Freeman E, Hunt PA. Bisphenol A exposure in utero disrupts early oogenesis in the mouse. *PLoS Genet* 2007;3(1):e5.
- [53] Eichenlaub-Ritter U, Vogt E, Cukurcam S, Sun F, Pachhierotti F, Parry J. Exposure of mouse oocytes to bisphenol A causes meiotic arrest but not aneuploidy. *Mutat Res* 2008;12(651):82–92.
- [54] Pepling M, Spradling AC. Mouse ovarian germ cell cysts undergo programmed breakdown to form primordial follicles. *Dev Biol* 2001;234:339–51.
- [55] Kim H, Nakajima T, Hayashi S, Chambon P, Watanabe H, Iguchi T, et al. Effects of diethylstilbestrol on programmed cell death and induction of polyovular follicles in neonatal mouse ovaries. *Biol Reprod* 2009;81(5):1002–9.
- [56] Nagao T, Yoshimura S, Saito Y, Nakagomi M, Usumi K, Ono H. Reproductive effects in male and female rats of neonatal exposure to genistein. *Reprod Toxicol* 2001;15:399–411.
- [57] Suzuki A, Sugihara A, Uchida K, Sato T, Ohta Y, Katsu Y. Developmental effects of perinatal exposure to bisphenol A and diethylstilbestrol on reproductive organs in female mice. *Reprod Toxicol* 2002;16:107–16.
- [58] Cimafranca MA, Davila J, Ekman GC, Andrews RN, Neese SL, Peretz J, et al. Acute and chronic effects of oral genistein administration in neonatal mice. *Biol Reprod* 2010;83:114–21.
- [59] Rivera OE, Varayoud J, Rodriguez HA, Munoz-de-Toro M, Luque EH. Neonatal exposure to bisphenol A or diethylstilbestrol alters the ovarian follicular dynamics in the lamb. *Reprod Toxicol* 2011;32(3):304312.
- [60] Karavan JR, Pepling M. Effects of estrogenic compounds on neonatal oocyte development. *Reprod Toxicol* 2012;34:51–6.
- [61] Rodriguez P, Limback D, McGinnis LK, Plancha CE, Albertini DF. Multiple mechanisms of germ cell loss in the perinatal mouse ovary. *Reproduction* 2009;137(4):709–20.
- [62] Eppig JJ. A comparison between oocyte growth in coculture with granulosa cells and oocytes with granulosa cell–oocyte junctional contact maintained in vitro. *J Exp Zool* 1979;209(2):345–53.
- [63] Gilchrist RB, Ritter LJ, Armstrong DT. Oocyte somatic cell interactions during follicle development in mammals. *Anim Reprod Sci* 2004;82:431–46.
- [64] Su Y, Wu X, O'Brien MJ, Pendola FL, Denegre JN, Matzuk MM, et al. Synergistic roles of BMP15 and GDF0 in the development and function of the oocyte–cumulus cell complex in mice: genetic evidence for an oocyte–granulosa cell regulatory loop. *Dev Biol* 2004;276:64–73.
- [65] Thomas FH, Vanderhyden BC. Oocyte–granulosa cell interactions during mouse follicular development: regulation of kit ligand expression and its role in oocyte growth. *Reprod Biol Endocrinol* 2006;4:19.
- [66] Orisaka M, Tajima K, Tsang BK, Kotsuji F. Oocyte–granulosa–theca cell interactions during preantral follicular development. *J Ovarian Res* 2009;2(1):9.
- [67] Canipari R. Oocyte–granulosa cell interactions. *Hum Reprod Update* 2000;6(3):279–89.
- [68] Nikaido Y, Yoshizawa K, Danbara N, Tsujita-Kyutoku M, Yuri T, Uehara N, et al. Effects of maternal xenoestrogen exposure on development of the reproductive tract and mammary gland in female CD-1 mouse offspring. *Reprod Toxicol* 2004;18(6):803–11.
- [69] Rubin BS, Lenkowski JR, Scaerberle CM, Vandenberg LN, Ronsheim PM, Soto AM. Perinatal exposure to low doses of bisphenol A affects body weight, patterns of estrous cyclicity and plasma LH levels. *Environ Health Perspect* 2001;109:675–80.
- [70] Jarrell J, YounLai EV, Barr R, McMahon A, Belbeck L, O'Connell G. Ovarian toxicity of cyclophosphamide alone and in combination with ovarian irradiation in the rat. *Cancer Res* 1987;47:2340–3.
- [71] Plowchalk DR, Meadows JM, Mattison DR. Reproductive toxicity of cyclophosphamide in the C57BL/6N mouse: 2. Effects on uterine structure and function. *Reprod Toxicol* 1992;6:423–9.
- [72] Plowchalk DR, Mattison DR. Reproductive toxicity of cyclophosphamide in the C37BL/6N mouse: 1. Effects on ovarian structure and function. *Reprod Toxicol* 1992;6(5):411–21.
- [73] Tam PPL, Liu WK. Gonadal development and fertility of mice treated prenatally with cadmium during the early organogenesis stages. *Teratology* 1985;32:453–62.
- [74] Barclay DL. Congenital diethylstilbestrol-associated vaginal/cervical adenosis (DES babies). *J Ark Med Soc* 1979;75:451–2.
- [75] Hatch EE, Troisi R, Wise LA, Hyer M, Palmer JR, Titus-Ernstoff L, et al. Age at natural menopause in women exposed to diethylstilbestrol in utero. *Am J Epidemiol* 2006;164:682–8.
- [76] Goldberg JM, Falcone T. Effects of diethylstilbestrol on reproductive function. *Fertil Steril* 1999;72:1–7.
- [77] Tenebaum A, Forsberg JG. Structural and functional changes in ovaries from adult mice treated with diethylstilbestrol in the neonatal period. *J Reprod Fertil* 1985;73:465–77.
- [78] Iguchi T, Takasugi N, Bern HA, Mills KT. Frequent occurrence of polyovular follicles in ovaries of mice exposed neonatally to diethylstilbestrol. *Teratology* 1986;34:29–35.
- [79] Jefferson E, Padilla-Banks E, Newbold R. Adverse effects on female development and reproduction in CD-1 mice following neonatal exposure to the phytoestrogen genistein at environmentally relevant doses. *Biol Reprod* 2005;72:798–806.
- [80] Tiemann U, Schneider F, Vanselow J, Tomek W. In vitro exposure of porcine granulosa cells to the phytoestrogens genistein and daidzein: effects on the biosynthesis of reproductive steroid hormones. *Reprod Toxicol* 2007;24:317–25.
- [81] Uzumcu M, Kuhn PE, Marano JE, Armenti AE, Passantino L. Early postnatal methoxychlor exposure inhibits folliculogenesis and stimulates anti-Müllerian hormone production in the rat ovary. *J Endocrinol* 2006;191:549–58.
- [82] Hall DL, Payne LA, Putnam JM, Huet-Hudson YM. Effect of methoxychlor on implantation and embryo development in the mouse. *Reprod Toxicol* 1997;11:703–8.
- [83] Suzuki M, Lee H, Chiba S, Yonezawa T, Nishihara M. Effects of methoxychlor exposure during perinatal period on reproductive function after maturation in rats. *J Reprod Dev* 2004;50:455–61.
- [84] Basavarajappa MS, Craig J, Hernandez-Ochoa I, Paulose T, Leslie TC, Flaws JA. Methoxychlor reduces estradiol levels by altering steroidogenesis and metabolism in mouse antral follicles in vitro. *Toxicol Appl Pharmacol* 2011;253:161–9.
- [85] Davis BJ, Maronpot RR, Heindel JJ. Di-(2-ethylhexyl)phthalate suppresses estradiol and ovulation in cycling rats. *Toxicol Appl Pharmacol* 1994;128:216–23.
- [86] Gray J, Laskey J, Ostby J. Chronic di-n-butyl phthalate exposure in rats reduces fertility and alters ovarian function during pregnancy in female Long Evans hooded rats. *Toxicol Sci* 2006;93(1):189–95.
- [87] Seiler P, Fischer B, Lindenau A, Beier HM. Fertilization and early embryology: effects of persistent chlorinated hydrocarbons on fertility and embryonic development in the rabbit. *Reproduction* 1994;9(10):19020–6.
- [88] Sun F, Betzendahl I, Van Wemmel K, Cortvrint R, Smits J, Pachhierotti F, et al. Trichlorfon-induced polyploidy and nondisjunction in mouse oocytes from preantral follicle culture. *Mutat Res* 2008;651(1–2):114–24.
- [89] Blandau RJ, Warrick E, Rumery RE. In vitro cultivation of fetal mouse ovaries. *Fertil Steril* 1965;16:705–15.
- [90] Eppig JJ, Schroeder AC. Capacity of mouse oocytes from preantral follicles to undergo embryogenesis and development to live young after growth, maturation and fertilization in vitro. *Biol Reprod* 1989;41:268–76.
- [91] Spears N, Boland NI, Murray A, Gosden RG. Mouse oocytes derived from in vitro grown primary ovarian follicles are fertile. *Hum Reprod* 1994;9(3):527–32.
- [92] Eppig JJ, O'Brien MJ. Development in vitro of mouse oocytes from primordial follicles. *Biol Reprod* 1996;54:197–207.
- [93] Klinger H, Felici M. In vitro development of growing oocytes from fetal mouse oocytes: stage-specific regulation by stem cell factor and granulosa cells. *Dev Biol* 2002;244:85–95.
- [94] Obata YM, Kono T, Hatada I. Maturation of mouse fetal germ cells in vitro. *Nature* 2002;418:97–8.



- [95] O'Brien MJ, Pendola FL, Eppig JJ. A revised protocol for in vitro development of mouse oocytes from primordial follicles dramatically improves their developmental competence. *Biol Reprod* 2003;168:2–6.
- [96] Picton HM, Danfour MA, Harris SE, Chambers EL, Huntriss J. Growth and maturation of oocytes in vitro. *Reprod Suppl* 2003;61:445–62.
- [97] Xu M, West-Farrell E, Stouffer RL, Shea LD, Woodruff TK, Zelinski MB. Encapsulated three-dimensional culture supports development of nonhuman primate secondary follicles. *Biol Reprod* 2009;81:587–94.
- [98] Jin SY, Lei L, Shikanov A, Shea LD, Woodruff K. A novel two-step strategy for in vitro culture of early stage ovarian follicles in the mouse. *Fertil Steril* 2010;93(8):2633–9.
- [99] Roy SK, Treacy BJ. Isolation and long term culture of human pre-antral follicles. *Fertil Steril* 1993;59:783–90.
- [100] Hirao Y, Nagai T, Kubo M, Miyano T, Miyake M, Kato S. In vitro growth and maturation of pig oocytes. *J Reprod Fertil* 1994;100:333–9.
- [101] Ralph JH, Wilmut I, Telfer EE. In vitro growth of bovine preantral follicles and the influence of FSH on follicular and oocyte diameters. *J Reprod Fertil Abstr Ser* 1995;15:6.
- [102] Telfer EE, McLaughlin M, Ding C, Thong KJ. A two-step serum-free culture system supports development of human oocytes from primordial follicles in the presence of activin. *Hum Reprod* 2008;23(5):1151–8.
- [103] McLaughlin M, Telfer EE. Oocyte development in bovine primordial follicles is promoted by activin and FSH within a two-step serum-free culture system. *Reproduction* 2010;139:971–8.
- [104] Xuying W, Jiangbo Z, Yuping Z, Xili MA, Zhen L, Fei W, et al. A novel method for toxicology: in vitro culture system of a rat preantral follicle. *Toxicol Ind Health* 2011;27(7):637–45.
- [105] Murray A, Spears N. Follicular development in vitro. *Semin Reprod Med* 2000;18(2):109–22.
- [106] Mochida N, Akatani-Hasegawa A, Saka K, Ogino M, Hosoda Y, Wada R, et al. Live births from isolated primary/early secondary follicles following a multi-step culture without organ culture in mice. *Reproduction* 2013;146(1):37–47.
- [107] Hartshorne GM. In vitro culture of ovarian follicles. *Rev Reprod* 1997;2:94–104.
- [108] Devine PJ, Rajapaksa KS, Hoyer PB. In vitro ovarian tissue and organ culture: a review. *Front Biosci* 2002;1(7):1979–89.
- [109] Picton HM, Harris SE, Muruvi W, Chambers EL. The in vitro growth and maturation of follicles. *Reproduction* 2008;136(6):703–15.
- [110] Sun F, Betzendahl I, Shen Y, Cortvrindt R, Smits J, Eichenlaub-Ritter U. Pre-antral follicle culture as a novel in vitro assay in reproductive toxicology testing in mammalian oocytes. *Mutagenesis* 2004;19(1):13–25.
- [111] Anderson RA, McLlwin L, Couetts S, Kinnell HL, Fowler PA, Childs AJ. Activation of the aryl hydrocarbon receptor by a component of cigarette smoke reduces germ cell proliferation in the human fetal ovary. *Mol Hum Reprod* 2014;20(1):42–8.
- [112] Eichenlaub-Ritter U. Parental age-related aneuploidy in human germ cells and offspring: a story of past and present. *Environ Mol Mutagen* 1996;28:211–36.
- [113] Eichenlaub-Ritter U. Genetics of oocyte ageing. *Maturitas* 1998;30:143–69.
- [114] Plachot M. Chromosomal abnormalities in oocytes. *Mol Cell Endocrinol* 2001;183(Suppl. 1):s59–63.
- [115] McLaren A, Southee D. Entry of mouse embryonic germ cells into meiosis. *Dev Biol* 1997;187(1):107–13.
- [116] Chuma S, Nakatsuji N. Autonomous transition into meiosis of mouse fetal germ cells in vitro and its inhibition by gp130-mediated signalling. *Dev Biol* 2010;229:468.
- [117] Motohashi H, Sankai T, Nariai K, Sato K, Kada H. Effects of in vitro culture of mouse fetal gonads on subsequent ovarian development in vivo and oocyte maturation in vitro. *Hum Cell* 2009;22(2):43–8.
- [118] Zhang Z, Lian G, Zhang X, Zhang C, Chao H, Li L, et al. Growth of mouse oocytes to maturity from premeiotic germ cells in vitro. *PLoS ONE* 2012;7(7):e41771.
- [119] Parrott JA, Skinner MK. Kit-ligand/stem cell factor induces primordial follicle development and initiates folliculogenesis. *Endocrinology* 1999;140(9):339–51.
- [120] Devine JP, Hoyer PB, Keating AF. Current methods in investigating the development of the female reproductive system. *Methods Mol Biol* 2009;550:137–57.
- [121] Cortvrindt R, Smits J, Van Steirteghem AC. In vitro maturation, fertilization and embryo development of immature oocytes from early preantral follicles from pre-pubertal mice in a simplified culture system. *Hum Reprod* 1996;11:2656–66.
- [122] Spears N, De Bruin JP, Gosden RG. The establishment of follicular dominance in co-cultured mouse ovarian follicles. *J Reprod Fertil* 1995;106(1):1–6.
- [123] Campbell L, Trendell J, Spears N. Identification of cells migrating from the thecal layer of ovarian follicles. *Cell Tissue Res* 2013;353(1):189–94.
- [124] Guillelte LJJ. Endocrine disrupting contaminants – beyond the dogma. *Environ Health Perspect* 2006;114(Suppl. 1):9–12.
- [125] Damstra TB, Bergman A, Kavlock R, Van Der Kraak G. WHO publication no. WHO/PCS/EDC/02.2. Geneva, Switzerland: World Health Organization; 2002.
- [126] Craig ZR, Wang E, Flaws JA. Endocrine disrupting chemicals in ovarian function: effects on steroidogenesis, metabolism and nuclear receptor signaling. *Reproduction* 2011;142(5):633–46.
- [127] Balabanič D, Rupnik M, Klemenčič AK. Negative impact of endocrine-disrupting compounds on human reproductive health. *Reprod Fertil Dev* 2011;23(3):403–16.
- [128] Devine JP, Sipes IG, Hoyer PB. Initiation of delayed ovotoxicity by in vitro and in vivo exposures of rat ovaries to 4-vinylcyclohexene diepoxide. *Reprod Toxicol* 2004;19:71–7.
- [129] Miller KP, Gupta RK, Greenfield C, Babus JK, Flaws JA. Methoxychlor directly affects ovarian antral follicle growth and atresia through Bcl-2 and Bax mediated pathways. *Toxicol Sci* 2005;88(1):213–21.
- [130] Gupta RK, Miller KP, Babus JK, Flaws JA. Methoxychlor inhibits growth and induces atresia of antral follicles through an oxidative stress pathway. *Toxicol Sci* 2006;93:382–9.
- [131] Lenie S, Cortvrindt R, Eichenlaub-Ritter U, Smits J. Continuous exposure to bisphenol A during in vitro follicular development induces meiotic abnormalities. *Mutat Res* 2008;651:71–81.
- [132] Mark-Knappeler CJ, Sen N, Lukefahr A, McKee L, Sipes G, Konhilas J, et al. Inhibition of ovarian KIT phosphorylation by the ovotoxicant 4-vinylcyclohexene diepoxide in rats. *Biol Reprod* 2011;85:755–62.
- [133] Inada H, Chihara K, Yamashita A, Miyawaki I, Fukuda C, Tateishi Y, et al. Evaluation of ovarian toxicity of mono-(2-ethylhexyl) phthalate (MEHP) using cultured rat ovarian follicles. *J Toxicol Sci* 2012;37(3):483–90.
- [134] Huang Y, Zhao X, Zhang Q, Xin X. The GnRH antagonist reduces chemotherapy-induced ovarian damage in rats by suppressing the apoptosis. *Gynecol Oncol* 2009;112:409–14.
- [135] Desmeules P, Devine PJ. Characterization of a rat in vitro ovarian culture system to study the ovarian toxicant 4-vinylcyclohexene diepoxide. *Toxicol Appl Pharmacol* 2006;184(2):107–15.
- [136] Meiorow D, Assad G, Dor J, Rabinovici J. The GnRH antagonist cetrorelix reduces cyclophosphamide-induced ovarian follicular destruction in mice. *Hum Reprod* 2004;19(6):1294–9.
- [137] Meiorow D, Epstein M, Lewis H, Nugent D, Gosden RG. Administration of cyclophosphamide at different stages of follicular maturation in mice: effects on reproductive performance and fetal malformations. *Hum Reprod* 2001;16(4):632–7.
- [138] Myllymaki SHT, Vainio M, Toppari J, Paranko J. In vitro effects of diethylstilbestrol, genistein, 4-tert-butylphenol and 4-tert-octylphenol on steroidogenic activity of isolated immature rat ovarian follicles. *Toxicol Appl Pharmacol* 2005;204:69–80.
- [139] Goldberg JM, Falcone T. Effect of diethylstilbestrol on reproductive function. *Fertil Steril* 1999;72:1–7.
- [140] Newbold R. Diethylstilbestrol (DES) and environmental estrogens influence the developing female reproductive system. In: *Endocrine disruptors*. CRC Press; 1999. p. 39–55.
- [141] Herbst AL, Ulfelder H, Poskanzer DC. Adenocarcinoma of the vagina: an association of maternal stilbestrol therapy with tumour appearing in young women. *N Engl J Med* 1971;284:878–87.
- [142] Wordinger RJ, Derrenbacker J. In utero exposure of mice to diethylstilbestrol alters neonatal ovarian follicle growth and development. *Acta Anat (Basel)* 1989;134(4):312–8.
- [143] Iguchi T, Fukezawa Y, Uesugi Y, Taksugi N. Polyovular follicles in mouse ovaries exposed neonatally to diethylstilbestrol in vivo and in vitro. *Biol Reprod* 1990;43(3):478–84.
- [144] Jurisicova A, Lee H, D'Estaing SG, Tillyl J, Perez GI. Molecular requirements for doxorubicin-mediated death in murine oocytes. *Cell Death Differ* 2006;13:1466–74.
- [145] Soleimani R, Heytens E, Darzynkiewicz Z, Oktay K. Mechanisms of chemotherapy induced human ovarian aging: double strand DNA breaks and microvascular compromise. *Aging* 2011;3(8):782–93.
- [146] Roti Roti EC, Leisman SK, Abbott DH, Salih SM. Acute doxorubicin insult in the mouse ovary is cell and follicle-type dependent. *PLoS ONE* 2012;7(8):e42293.
- [147] Bar-Joseph H, Ben-Aharon I, Rizel S, Stemmer SM, Tzabari M, Shalgi R. Doxorubicin-induced apoptosis in germinal vesicle (GV) oocytes. *Reprod Toxicol* 2010;30:566–72.
- [148] Burrigge E. Bisphenol A: product profile. *Eur Chem News* 2003;17:14–20.
- [149] Kang J, Kondo F, Katayama Y. Human exposure to bisphenol A. *Toxicology* 2006;226:79–89.
- [150] Gilbert J, Startin JR, Wallwork MA. Gas chromatographic determination of 1,1,1-trichloroethane in vinyl chloride polymers and in foods. *J Chromatogr* 1978;160:127–32.
- [151] Fung EY, Ewoldsen NO, St Germain HA, Marx DB, Miaw CL, Siew C, et al. Pharmacokinetics of bisphenol A released from a dental sealant. *J Am Dent Assoc* 2000;131:51–8.
- [152] Krishnan AV, Stathis P, Permuth SF, Tokes L, Feldman D. Bisphenol-A: an estrogenic substance is released from polycarbonate flasks during autoclaving. *Endocrinology* 1993;132:2279–86.
- [153] Brotons JA, Ole-Serrano MF, Villalobos M, Pedraza V, Olea N. Xenoestrogens released from lacquer coatings in food cans. *Environ Health Perspect* 1995;103:608–12.
- [154] Calafat AM, Kuklenyik Z, Reidy JA, Caudill SP, Ekong J, Needham LL. Urinary concentrations of bisphenol A and 4-nonylphenol in a human reference population. *Environ Health Perspect* 2005;113:391–5.
- [155] Volkel W, Colnot T, Csanady GA, Filser JG, Dekant W. Metabolism and kinetics of bisphenol A in humans at low doses following oral administration. *Chem Res Toxicol* 2002;14:1281–7.
- [156] Takeuchi T, Tsutsumi O, Ikezuki Y, Takai Y, Taketani Y. Positive relationship between androgen and endocrine disruptor, bisphenol A, in normal women with ovarian dysfunction. *Endocr J* 2004;51(2):165–9.

- [157] Sugiura-Ogasawara M, Ozaki Y, Sonta S, Makino T, Suzumori K. Exposure to bisphenol A is associated with recurrent miscarriage. *Hum Reprod* 2005;20:2325–9.
- [158] Rodríguez HA, Santambrosio NS, Santamaria CG, Muñoz-de-Toro M, Luque EH. Neonatal exposure to bisphenol A reduces the pool of primordial follicles in the rat ovary. *Reprod Toxicol* 2010;30:550–7.
- [159] Can A, Semiz O, Cinar O. Bisphenol-A induces cell cycle delay and alters centrosome and spindle microtubular organization in oocytes during meiosis. *Mol Hum Reprod* 2005;11(6):389–96.
- [160] Hunt PA, Lawson C, Gieske M, Murdoch B, Smith H, Marre A, et al. Bisphenol A alters early oogenesis and follicle formation in the fetal ovary of the rhesus monkey. *Proc Natl Acad Sci U S A* 2012;109:17525–30.
- [161] Zhang T, Li L, Qin X, Zhou Z, Zhang X, Wang L, et al. Di-(2-ethylhexyl) phthalate and bisphenol A exposure impairs mouse primordial follicle assembly in vitro. *Environ Mol Mutagen* 2014;45(4):343–53.
- [162] Graselli F, Baratta L, Baioni L, Bussolati S, Ramoni R, Grolli S, et al. Bisphenol A disrupts granulosa cell function. *Domest Anim Endocrinol* 2010;39:34–9.
- [163] Delclos KB, Camacho L, Lewis SM, Vanlandingham MM, Latendresse JR, Olson GR, et al. Toxicity evaluation of bisphenol A administered by gavage to Sprague Dawley rats from gestation day 6 through postnatal day 90. *Toxicol Sci* 2014;139(1):174–97.
- [164] Zhou W, Liu J, Liao L, Han S. Effects of bisphenol A on steroid hormone production in rat ovarian theca-interstitial and granulosa cells. *Mol Cell Endocrinol* 2008;283:12–8.
- [165] Mlynarcikova A, Kolena A, Kolena J, Fickova M, Scsukova S. Alterations in steroid hormone production by porcine ovarian granulosa cells caused by bisphenol A and bisphenol A dimethacrylate. *Mol Cell Endocrinol* 2005;244:57–62.
- [166] Xu J, Osuga Y, Yano T, Morita Y, Tang X, Fujiwara T, et al. Bisphenol A induces apoptosis and G2-M arrest of ovarian granulosa cells. *Biochem Biophys Res Commun* 2002;292(2):456–62.
- [167] Lovekamp-Swan TN, Davis BJ. Mechanisms of phthalate ester toxicity in the female reproductive system. *Environ Health Perspect* 2003;111:139–45.
- [168] Thomas JA, Thomas MJ. Biological effects of di(2-ethylhexyl) phthalate and other phthalic acid esters. *Crit Rev Toxicol* 1984;(13):283–317.
- [169] Aldyreva MV, Klimova TS, Izuimova AS, Timofeevskaia LA. The effect of phthalate plasticizers on the generative function. *Gig Tr Prof Zabol* 1975;19:25–9.
- [170] Tabacova S, Little R, Balabaeva L. Maternal exposure to phthalates and complications of pregnancy. *Epidemiology* 1999;10(Suppl.):s127 [abstract 368 O; 1999 Annual conference of the ISEE and ISEA].
- [171] European Commission. Restrictions on marketing and use of certain dangerous substances and preparations (phthalates in toys and childcare articles) directive 2005/84/E. *Off J Eur Union* 2005;L344:40–3.
- [172] Moyer B, Hixon M. Reproductive effects in F1 adult females exposed in utero to moderate to high doses of mono-2-ethylhexylphthalate (MEHP). *Reprod Toxicol* 2012;34:43–50.
- [173] Wan X, Zhu Y, Ma X, Zhu J, Zheng Y, Hou J, et al. Effect of DEHP and its metabolite MEHP on in vitro rat follicular development. *Wei Sheng Yan Jiu* 2010;39(3):268–70, 274.
- [174] Gupta RK, Singh JM, Leslie TC, Meachum S, Flaws JA, Yao HH. Di-(ethylhexyl) phthalate and mono-(2-ethylhexyl) phthalate inhibit growth and reduce estradiol levels of antral follicles in vitro. *Toxicol Appl Pharmacol* 2010;242(2):224–30.
- [175] Wang W, Craig ZR, Basavarajappa MS, Hafner KS, Flaws JA. Mono-(2-ethylhexyl) phthalate induces oxidative stress and inhibits growth of mouse ovarian antral follicles. *Biol Reprod* 2012;87(6):152.
- [176] Grande SW, Andrade AJM, Talsness CE, Grote K, Golombiewski A, Sterner-Kock A, et al. A dose-response study following in utero and lactational exposure to di-(2-ethylhexyl) phthalate (DEHP): reproductive effects on adult female offspring rats. *Toxicology* 2007;229:114–22.
- [177] Lovekamp TN, Davis BJ. Mono-(2-ethylhexyl) phthalate suppresses aromatase transcript levels and estradiol production in cultured rat granulosa cells. *Toxicol Appl Pharmacol* 2001;172(3):217–24.
- [178] Reinsberg J, Wegener-Toper P, van der Ven K, van der Ven H, Klingmueller D. Effect of mono-(2-ethylhexyl) phthalate on steroid production of human granulosa cells. *Toxicol Appl Pharmacol* 2009;239(1):116–23.
- [179] Snedeker SM. Pesticides and breast cancer risk: a review of DDT, DDE and dieldrin. *Environ Health Perspect* 2001;109:35–47.
- [180] Vos JG, Dybing E, Greim HA, Ledefoged O, Lambrec C, Tarazona JV. Health effects of endocrine-disrupting chemicals on wildlife, with special reference to the European situation. *Crit Rev Toxicol* 2000;30:71–133.
- [181] Baukloh V, Bohnet HG, Trapp M, Heesch W, Feichtinger W, Kemeter P. Bio-cides in human follicular fluid. *Ann N Y Acad Sci* 1985;442:240–50.
- [182] Jarrell J, Villeneuve D, Franklin C, Bartlett S, Wrixon W, Kohut J. Contamination of human ovarian follicular fluid and serum by chlorinated organic compounds in three Canadian cities. *CMAJ* 1993;148:1321–7.
- [183] Younglai EV, Foster WG, Hughes EG, Trim K, Jarrell J. Levels of environmental contaminants in human follicular fluid, serum and seminal plasma of couples undergoing in vitro fertilization. *Arch Environ Contam Toxicol* 2002;43:121–6.
- [184] Gotz F, Thieme S, Dorner G. Female infertility – effect of perinatal exposure on reproductive functions in animals and humans. *Folia Histochem Cytobiol* 2001;29:40–3.
- [185] Ayotte P, Giroux S, Dewailly E, Avila MH, Farias P, Danis R. DDT spraying for malaria control and reproductive function in Mexican men. *Epidemiology* 2001;12:366–7.
- [186] Holloway AC, Petrik JJ, Younglai EV. Influence of dichlorodiphenylchloroethylene on vascular endothelial growth factor and insulin-like growth factor in human and rat ovarian cells. *Reprod Toxicol* 2007;24(3–4):359–64.
- [187] Crellin NK, Rosway MR, Swan CL, Gillio-Meina C, Chedrese PJ. Dichlorodiphenylchloroethylene potentiates the effects of protein kinase A pathway activators on progesterone synthesis in cultured porcine granulosa cells. *Biol Reprod* 1999;61(4):1099–103.
- [188] Chedrese PJ, Feyles F. The diverse mechanism of action of dichlorodiphenylchloroethylene (DDE) and methoxychlor in ovarian cells in vitro. *Reprod Toxicol* 2001;15(6):693–8.
- [189] Crellin NK, Kang HG, Swan CL, Chedrese PJ. Inhibition of basal and stimulated progesterone synthesis by dichlorodiphenylchloroethylene and methoxychlor in a stable pig granulosa cell line. *Reproduction* 2001;121:485–92.
- [190] Bal HS, Mungtokornkarn P. Chronic toxicity effects of methoxychlor on the reproductive system in the rat. *Int Congr Toxicol* 1978;44:6–447.
- [191] Martinez EM, Swartz WJ. Effect of methoxychlor on the reproductive system of the adult female mouse: gross and histological observations. *Reprod Toxicol* 1991;5:139–47.
- [192] Craig ZR, Leslie TC, Hatfield KP, Gupta RK, Flaws JA. Mono-hydroxy methoxychlor alters the levels of key sex steroids and steroidogenic enzymes in cultured mouse antral follicles. *Toxicol Appl Pharmacol* 2010;249:107–13.
- [193] Alm H, Torner H, Tiemann U, Wilhelm K. Influence of organochlorine pesticides on maturation and postfertilization development of bovine oocytes in vitro. *Reprod Toxicol* 1998;12(5):559–63.
- [194] Bal HS. Effects of methoxychlor on reproductive systems of the rat. *Proc Soc Exp Biol Med* 1984;176(2):187–96.
- [195] Borgeest C, Miller KP, Gupta RK, Greenfield C, Hruska KS, Hoyer PB, et al. Methoxychlor-induced atresia in the mouse involves Bcl-2 family members, but not gonadotropins or estradiol. *Biol Reprod* 2004;70(6):1828–35.
- [196] Eroschenko VP, Abuel-Atta AA, Grober MS. Neonatal exposures to technical methoxychlor alters ovaries in adult mice. *Reprod Toxicol* 1995;9(4):379–87.
- [197] Smith BJ, Mattison DR, Sipes G. The role of epoxidation in 4-vinylcyclohexene-induced ovarian toxicity. *Toxicol Appl Pharmacol* 1990;105(3):372–81.
- [198] Flaws JA, Doerr JK, Sipes G, Hoyer PB. Destruction of preantral follicles in adult rats by 4-vinylcyclohexene diepoxide. *Reprod Toxicol* 1994;8(6):509–14.
- [199] Mayer LP, Pearsall NA, Christian PJ, Devine PJ, Payne CM, McCuskey MK, et al. Long-term effects of ovarian follicular depletion in rats by 4-vinylcyclohexene diepoxide. *Reprod Toxicol* 2002;16:775–81.
- [200] Hoyer PB, Sipes IG. Development of an animal model for ovotoxicity using 4-vinylcyclohexene: a case study. *Birth Defects Res B Dev Reprod Toxicol* 2007;80(2):113–25.
- [201] Kao SW, Sipes G, Hoyer PB. Early effects of ovotoxicity induced by 4-vinylcyclohexene diepoxide in rats and mice. *Reprod Toxicol* 1999;13(1):67–75.
- [202] Devine JP, Sipes G, Skinner MK, Hoyer PB. Characterization of a rat in vitro ovarian culture system to study to ovarian toxicant 4-vinylcyclohexene diepoxide. *Toxicol Appl Pharmacol* 2002;184(2):107–15.
- [203] Pocar P, Diandenesse N, Secchi C, Berrini A, Fischer B, Schmidt J, et al. Effects of polychlorinated biphenyls in CD-1 mice: reproductive toxicity and intergenerational transmission. *Toxicol Sci* 2012;126(1):213–26.
- [204] Jensen S. Report of a new chemical hazard. *New Sci* 1966;32:612.
- [205] Safe S. Toxicology, structure–function relationship, and human and environmental health impacts of polychlorinated biphenyls: progress and problems. *Environ Health Perspect* 1993;100:259–68.
- [206] Kaya H, Hany J, Fastabend A, Roth-Harer A, Winneke G, Lilienthal H. Effects of maternal exposure to a reconstituted mixture of polychlorinated biphenyls on sex-dependent behaviours and steroid hormone concentrations in rats: dose response relationship. *Toxicol Appl Pharmacol* 2002;178:71–81.
- [207] Pocar P, Perazzoli F, Luciano AM, Gandolfi F. In vitro reproductive toxicity of polychlorinated biphenyls: effects on oocyte maturation and developmental competence in cattle. *Mol Reprod Dev* 2001;58:411–6.
- [208] Ronnbck C. Effects of 3,3',4',4'-tetrachlorobiphenyl (TCB) on ovaries of foetal mice. *Pharmacol Toxicol* 1991;68(5):340–5.
- [209] Baldrige MG, Stahl RL, Gerstenberger SL, Tripoli V, Hutz RJ. Modulation of ovarian follicle maturation in Long–Evans rats exposed to polychlorinated biphenyls (PCBs) in utero and lactationally. *Reprod Toxicol* 2003;17:567–73.
- [210] Wojtoicz AK, Gregoraszcuk EL, Lyche JL, Ropstad E. Time dependent and cell-specific action of polychlorinated biphenyls (PCB 153 and PCB 126) on steroid secretion by porcine theca and granulosa cells in mono- and co-culture. *J Physiol Pharmacol* 2000;51(3):555–68.
- [211] Gregoraszcuk EL, Wojtoicz AK. In vitro exposure of porcine ovarian follicular cells to PCB 153 alters steroid secretion but not their viability – preliminary study. *Sci World J* 2002;2:261–7.
- [212] Gregoraszcuk EL, Ptak A, Karniewska M, Ropstad E. Action of defined mixtures of PCBs, p,p'-DDT and its metabolite p,p'-DDE on co-culture of porcine theca and granulosa cells: steroid secretion, cell proliferation and apoptosis. *Reprod Toxicol* 2008;26:170–4.
- [213] Lightfoot RJ, Croker KP, Neil HG. Failure of sperm transport in relation to ewe infertility following prolonged grazing on oestrogenic pastures. *Aust J Agric Res* 1967;19:755–65.
- [214] Lamartiniere CA, Murrill WB, Manzolillo PA, Zhang JX, Barnes S, Zhang X, et al. Genistein alters the ontogeny of mammary gland development and protects against chemically-induced mammary cancer in rats. *Proc Soc Exp Biol Med* 1998;217(3):358–64.



- [215] Basini G, Bussolati S, Santini SE, Graselli F. The impact of the phyto-estrogen genistein on swine granulosa cell function. *J Anim Physiol Anim Nutr (Berl)* 2010;94:e374–82.
- [216] Chen Y, Jefferson WN, Newbold R, Padilla-Banks E. Estradiol, progesterone and genistein inhibit oocyte nest breakdown and primordial follicle assembly in the neonatal mouse in vitro and in vivo. *Endocrinology* 2007;148(8):3580–90.
- [217] Medigovic I, Ristic N, Trifunovic S, Manojlovic-Stojanoski M, Milossevici V, Zikic D, et al. Genistein affects ovarian folliculogenesis: a stereological study. *Microsc Res Tech* 2012;75:1691–9.
- [218] Wojtoqicz AK. Effects of single and repeated in vitro exposure of ovarian follicles to o,p' DDT and p,p' DDT and their metabolites. *Pol J Pharmacol* 2004;56:465–72.
- [219] Zhuang XL, Fu YC, Xu JJ, Kong XX, Chen ZG, Luo LL. Effects of genistein on ovarian follicular development and ovarian life span in rats. *Fitoterapia* 2010;81:998–1002.
- [220] Assies J, Vonk J, Bleker O, Lumey L. Diethylstilbestrol (DES) – related endocrine disturbances in women. A story with no end, yet. *Ann N Y Acad Sci* 1995;761:369–72.
- [221] ICH. Detection of toxicity to reproduction for medicinal products and toxicity to male fertility S5 (R2). ICH harmonised tripartite guideline; 1993.
- [222] Muller L, Kikuchi Y, Probst G, Schechtman L, Shimada H, Sofuni T, et al. ICH-harmonised guidances on genotoxicity testing of pharmaceuticals: evolution, reasoning and impact. *Mutat Res* 1999;436(3):195–225.
- [223] EFSA. Scientific opinion on the hazard assessment of endocrine disruptors: scientific criteria for identification of endocrine disruptors and appropriateness of existing test methods for assessing effects mediated by these substances on human health and the environment. *EFSA J* 2013;11(3):3132.
- [224] Bristol-Gould SK, Kreeger PK, Selkirk CG, Kilen SM, Cook RW, Kipp JL, et al. Postnatal regulation of germ cells by activating: the establishment of the initial follicle pool. *Dev Biol* 2006;298(1):132–48.
- [225] Davila JC, Rodriguez RJ, Melchert RB, Acosta D. Predictive value of in vitro model systems in toxicology. *Annu Rev Pharmacol Toxicol* 1998;38:63–96.
- [226] Jackson MR. Priorities in the development of alternative methodologies in the pharmaceutical industry. *Arch Toxicol Suppl* 1998;20(Suppl.):61–70.
- [227] Scholz S, Renner P, Belanger S, Busquet F, Davi R, Demeneix BA, et al. Alternative to in vivo tests to detect endocrine disrupting chemicals (EDCs) in fish and amphibians – screening for estrogen, androgen and thyroid hormone disruption. *Crit Rev Toxicol* 2013;43(1):45–72.
- [228] Segner H. Zebrafish (*Danio Rerio*) as model organism for investigating endocrine disruption. *Comp Biochem Physiol C Toxicol Pharmacol* 2009;149:187–95.
- [229] Ankley GT, Daston GP, Degitz SJ. Toxicogenomics in regulatory exotoxicology. *Environ Sci Technol* 2006;40(13):4055–65.
- [230] Doerge DR, Twaddle NC, Vanlandingham M, Fisher JW. Pharmacokinetics of bisphenol A in neonatal and adult Sprague-Dawley rats. *Toxicol Appl Pharmacol* 2010;247(2):158–65.
- [231] Fisher JW, Twaddle NC, Vanlandingham M, Doerge DR. Pharmacokinetic modeling: prediction and evaluation of route dependent dosimetry of bisphenol A in monkeys with extrapolation to humans. *Toxicol Appl Pharmacol* 2011;257(1):122–36.
- [232] Herreros MA, Gonzalez-Bulnes A, Inigo-nunez S, Letelier C, Contreras-Solis I, Ros-Rodriguez JM, et al. Pregnancy-associated changes in plasma concentration of the endocrine disruptor di(2-ethylhexyl) phthalate in a sheep model. *Theriogenology* 2010;73:141–6.
- [233] Munn S, Goumenou M. Key scientific issues relevant to the identification and characterisation of endocrine disrupting substances. *JRC Scientific and policy reports*; 2013.