

This is the authors' pre-publication version of an articles published in IOVS
2008;49(12):5373-5385. [doi:10.1167/iovs.07-1501](https://doi.org/10.1167/iovs.07-1501) The definitive version is available
from: <http://www.iovs.org/cgi/content/full/49/12/5373>

**Screening tests for detecting open angle glaucoma:
systematic review and meta-analysis**

Graham Mowatt,¹ Jennifer M. Burr,^{1,2} Jonathan A. Cook,¹ M.A. Rehman Siddiqui,²
Craig Ramsay,¹ Cynthia Fraser,¹ Augusto Azuara-Blanco,² Jonathan J Deeks,³ for the
OAG Screening Project Group

¹Health Services Research Unit, Institute of Applied Health Sciences, College of Life
Sciences and Medicine, University of Aberdeen

²Eye Clinic, Aberdeen Royal Infirmary

³Department of Public Health and Epidemiology, University of Birmingham

Corresponding author: Graham Mowatt, Health Services Research Unit, 3rd Floor,
University of Aberdeen, Health Sciences Building, Foresterhill, Aberdeen AB25 2ZD,
UK; g.mowatt@abdn.ac.uk.

Funding

This paper was developed from a Health Technology Assessment on the clinical and
cost-effectiveness of screening for OAG, and funded by the UK National Institute for
Health Research Health Technology Assessment programme (project number
04/08/02). The authors' work was independent of the funding source.

Word count: abstract, 250; main text excluding title page, abstract, tables, figures and references, 3898.

Purpose

To assess the comparative accuracy of potential screening tests for open angle glaucoma (OAG).

Methods

Medline, Embase, Biosis (to November 2005), Science Citation Index (to December 2005) and The Cochrane Library (Issue 4 2005) were searched. Studies assessing candidate screening tests for detecting OAG in people over 40 years of age that reported true and false positives and negatives were included. Meta-analysis was undertaken using the hierarchical summary receiver operating characteristic model.

Results

Forty studies enrolling over 48,000 people reported nine tests. Most tests were reported by only a few studies. Frequency Doubling Technology (FDT) (C-20-1) was significantly more sensitive than ophthalmoscopy (30, 95% credible interval (CrI) 0 to 62) and Goldmann applanation tonometry, (GAT), (45, 95% CrI 17 to 68), while threshold standard automated perimetry (SAP) and Heidelberg Retinal Tomograph (HRT II) were both more sensitive than GAT (41, 95% CrI 14 to 64 and 39, 95% CrI 3 to 64 respectively). GAT was more specific than both FDT C-20-5 (19, 95% CrI 0 to 53) and threshold SAP (14, 95% CrI 1 to 37). Judging performance by diagnostic odds ratio, FDT, Oculokinetic perimetry and HRT II are promising tests. Ophthalmoscopy, SAP, retinal photography and GAT had relatively poor performance as single tests. These findings are based on heterogeneous data of limited quality and as such associated with considerable uncertainty.

Conclusions

No test or group of tests were clearly superior as glaucoma screening tests. Further research is required to evaluate the comparative accuracy of the most promising tests.

Introduction

Glaucoma describes a group of eye diseases in which there is progressive damage to the optic nerve, leading to impaired vision and in some cases blindness if untreated. Glaucoma is the leading cause of irreversible blindness worldwide,^{1,2} with open angle glaucoma (OAG) the most common form.¹ Late detection is a major risk factor for blindness;^{1,3-5} it is estimated from population surveys that in developed countries, more than 50% of prevalent OAG is undetected,⁶ and this estimate is likely to be higher in developing countries. Recent evidence suggests that treatment is effective at delaying progression,^{7,8} thus population based screening of OAG is under consideration.^{6,9-11} For screening to be considered several criteria need to be met regarding the condition, the test and the screening programme.⁹

Tests for glaucoma involve an assessment of structural changes at the optic nerve head, functional visual loss by visual field testing, and the level of the intraocular pressure (IOP). There are many potential tests or combinations of tests for detecting glaucoma, however to date no single test or combination of tests has been identified as an optimal screening 'test' for glaucoma.

The aim of this study was to assess the comparative accuracy of candidate screening tests.

Methods

Search Strategy

Highly sensitive electronic searches, using both controlled vocabulary and free text terms, were undertaken. We searched the following electronic databases: Medline (1966 - November Week 3 2005), Medline In Process (23 February and 6 December 2005), Embase (1980 - 2005 Week 49), Science Citation Index (1981 - 3 December 2005), Biosis (1985 - 30 November 2005) and Cochrane Central Register of Controlled Trials (CENTRAL) (The Cochrane Library, Issue 4 2005). In addition full text electronic searches of the American Journal of Ophthalmology (1998 - November 2005), Ophthalmology (1998 - November 2005), British Journal of Ophthalmology (1998 - November 2005), Investigative Ophthalmology & Visual Science (1998 - November 2005) and the Journal of Glaucoma (2001 - November 2005) were undertaken. Searches were restricted to English language publications. The reference lists of included studies were scanned to identify additional potentially relevant reports. Full details of the sources searched and search strategies used are available elsewhere⁶ or can be obtained by contacting the authors.

Inclusion and Exclusion Criteria

We included studies that assessed the accuracy of tests for detecting OAG in people over 40 years of age who were likely to be representative of a screening situation (i.e. no selection and no previous tests have been done) or of a glaucoma suspect population (i.e. patients identified from prior testing as possibly having glaucoma or having e.g., high IOP, or another risk factor for glaucoma but with an unconfirmed diagnosis) Both randomised (where participants were randomised to one or more tests) and observational (both cohort and case-control) studies were included. The

reference standard was either confirmed OAG on follow-up or ophthalmologist-diagnosed OAG as reported by the study. This latter reference standard required a clinical judgement by an ophthalmologist including an evaluation of the optic nerve and a measure of visual function. In addition the study had to either report or allow the calculation of true and false positives and negatives.

Non-English language reports were excluded, as were conference abstracts. Case reports and studies investigating technical aspects of a test were excluded. Case-control studies where the control group consisted of people with no ocular disease or specifically excluded people with other ocular disease, so that the spectrum of disease and non-disease was unlike that to be encountered in a screening situation, were also excluded. The spectrum of disease expected would be similar to the spectrum of the disease of the general population (e.g., more patients with mild glaucoma, less patients with severe glaucoma).

The candidate tests fell within the three broad categories of (a) structure (ophthalmoscopy; optic disc photography; retinal nerve fibre layer (RNFL) photography; Heidelberg retinal tomography (HRT) version II; GDx VCC retinal nerve fibre layer (RNFL) analyser; optical coherence tomography (OCT); retinal thickness analyser (RTA)), (b) function (oculokinetic perimetry (OKP); white-on-white standard automated perimetry (SAP) including suprathreshold and threshold; short wave-length automated perimetry (SWAP); frequency doubling technology (FDT); motion detection perimetry (MDP)) and (c) IOP (Goldmann applanation tonometry (GAT); non contact tonometry (NCT); Tonopen).

Data Abstraction and Quality Assessment

Two reviewers undertook single data extraction of the included studies. In the event of any uncertainty, the other reviewer provided advice and validated the data extraction.

Two reviewers independently assessed the quality of the included studies using a version of QUADAS adapted for assessing reports of the accuracy of screening tests for OAG. QUADAS is a quality assessment tool for use in systematic reviews of diagnostic studies.¹² Disagreements were resolved by consensus or arbitration by a third reviewer. A 'higher quality study' was considered to be one that was checked 'yes' to questions 1 (patient spectrum representative), 3 and 4 (partial and differential verification bias avoided) and 6 and 7 (test review bias and diagnostic review bias avoided) of the adapted QUADAS checklist.

Statistical Methods

After data extraction a 'common' (most frequently reported) cutoff for each test was selected following discussion by two ophthalmologists (JB, RS). Summary receiver operating characteristic (SROC) curves were produced for each test where two or more studies reported estimates of sensitivity and specificity at the common cutoff. Meta-analysis models were fitted using the hierarchical summary receiver operating characteristic (HSROC) model¹³ in WinBUGS 1.4.¹⁴ Normally distributed random effects were assumed with non-informative uniform priors. No adjustment was made for the correlation between results from paired studies, as the level of information required is rarely reported. Summary sensitivity, specificity and diagnostic odds ratios (DORs) at the operating point were reported for each model as median and 95% credible interval (CrI). A DOR is a single indicator of test performance and is the ratio of the odds of testing positive in those with the disease

relative to the odds of testing positive in those without the disease.¹⁵ It can be calculated from the sensitivity and specificity:

$$\text{DOR} = (\text{sensitivity} / (1 - \text{sensitivity})) / ((1 - \text{specificity}) / \text{specificity})$$

Credible intervals are the Bayesian equivalent of confidence intervals. A simplified model, which assumed a symmetrical ROC shape, was used where limited data caused convergence problems under the full model. Sensitivity analysis was undertaken by examining separately the results of the higher quality studies, using HSROC analysis where more than one higher quality study reported the same test.

Comparisons between tests were made in two ways. First, studies which directly compared participants who either received all tests or were randomised to different tests were identified, and the direct comparisons inspected. Secondly, an indirect comparison between tests, for all tests reported by two or more studies were modelled together in a single HSROC model to formally compare test performance. Pair-wise differences in sensitivity and specificity between tests were assessed from the median difference and corresponding 95% CrI.

Results

Trial Flow

Figure 1 shows the flow of studies through the review. Out of a total of 5918 titles/abstracts screened, 877 potentially relevant full text articles were obtained, with 40 studies, published in 46 reports, meeting the inclusion criteria.

Study Characteristics and Methodological Quality

The characteristics of the included studies are shown in Table 1. Twenty studies were population-based and representative of a screening setting¹⁶⁻³⁹ while 20 studies

were considered representative of a glaucoma-suspect population referred from primary care, of which eight were cohort studies⁴⁰⁻⁴⁷ and 12 were case-control studies.⁴⁸⁻⁶¹ Seven studies^{18,34,40,43,44,48,58} used the first and best reference standard of OAG confirmed on longitudinal follow-up while the remainder used ophthalmologist-diagnosed OAG.

The 40 studies enrolled over 48,000 people, with over 39,000 included in the analysis. The studies took place from 1963 to 2004. In 26 studies reporting participant gender, 51% were women. The median (range) age of participants across studies was 60.5 years (13 to 97 years). The reports included a number of major population-based prevalence surveys, such as the Baltimore Eye Survey,^{25,31} the Blue Mountains Eye Study,²³ the Crete, Greece Glaucoma Study,²⁷ the Dalby Population Survey,¹⁷ the Egna-Neumarkt Study,¹⁸ the Framingham Eye Study,⁴³ the Glaucoma Screening Study (GLASS),^{24,26} the Groningen Longitudinal Glaucoma Study,^{53,54,59} the Rhondda Valley Study,²² the Rotterdam Study,³⁸ the Segovia Study¹⁶ and the Visual Impairment Project.³⁷

The included studies reported the following tests: ophthalmoscopy (seven studies); optic disc photography (six studies); retinal nerve fibre layer (RNFL) photography (four studies); Heidelberg retinal tomograph (HRT) II (three studies); oculokinetic perimetry (OKP) (four studies); standard automated perimetry (SAP) (14 studies); frequency doubling technology (FDT) (eight studies); Goldmann applanation tonometry (GAT) (nine studies); non contact tonometry (NCT) (one study). No reports of GDx VCC, OCT, RTA, SWAP, MDP or Tonopen were identified that met our inclusion criteria.

Figure 2 summarises the results of the quality assessment for the 40 included studies. Study quality was variable, only eight studies^{20,21,30,34,38,39,45,46} met the specified criteria for higher quality studies.

Quantitative Data Synthesis

- Individual tests

The sensitivity and specificity of the individual tests included in the HSROC meta-analysis models are shown in Figure 3 and Appendix 1, which also includes DORs.

DORs ranged from 10 for FDT C-20-5 to 181 for FDT C-20-1, with higher DORs indicating a better ability to differentiate between disease and non-diseased. There was statistical heterogeneity (variability in outcome beyond what would be expected by chance) across studies for most tests. Ophthalmoscopy, retinal photography (optic disc photography and RNFL photography), GAT, standard automated perimetry (threshold and suprathereshold) and FDT C20-5 were all relatively poorly performing tests based on lower DORs (range 10-30).

Eight studies met the criteria for higher quality studies, including six population-based studies and two cohort studies, and test accuracy data are detailed in Table 2. For both SAP threshold and FDT C-20-5, higher quality studies reported lower values for both sensitivity and specificity when compared with all studies, while two FDT C-20-5 studies not meeting the criteria for higher quality reported very high sensitivity values (98% and 100% respectively). For optic disc photography, compared with all studies, the higher quality studies reported similar sensitivity (74% versus 73%) but lower specificity (82% versus 89%). For HRT II, compared with all studies, the higher quality studies reported higher sensitivity (93% versus 86%) but slightly lower specificity (85% versus 89%).

Seven studies reported test accuracy in different stages of glaucoma.^{24,51,52,54,55,60,61} Of those reporting the same tests for different stages of glaucoma, Jeong and colleagues⁵⁵ reported a sensitivity of 72% for SAP (suprathereshold) for early stage

glaucoma while Enger and colleagues⁵¹ and Katz and colleagues²⁴ both reported a sensitivity of 97% for SAP (threshold) for early/moderate stage glaucoma.

- Studies directly comparing tests

Six studies directly compared two or more of the following tests for detection of OAG: optic disc photography, HRT II, SAP, FDT, GAT.^{23,30,34,36,46,55} Table 3 shows the common cut-off selected, sensitivity, specificity, DORs and relative DORs for these studies. In each study SAP (either suprathreshold or threshold) was included as a comparator. DORs for the tests ranged from 4 for SAP threshold⁴⁶ to 75 for HRT II³⁰ (Table 3). In terms of relative DORs, compared with SAP, GAT performed better in one study³⁶ but worse in another²³ (statistically significant), HRT II performed better than SAP in one study³⁰ (statistically significant) but worse in another,⁵⁵ FDT C-20-5³⁰ and FDT C-20 matrix⁴⁶ performed better than SAP, while optic disc photography³⁴ showed a broadly similar performance.

- Indirect comparisons in a single HSROC model

The results of the indirect comparisons in a single HSROC model are shown in Table 4. From the large number of comparisons undertaken, six showed a statistically significant difference between tests (four in terms of sensitivity and two in terms of specificity). There was evidence that, at the common cut-off, FDT C-20-1 was significantly more sensitive than both ophthalmoscopy (30, 95% CrI 0 to 62) and GAT (45, 95% CrI 17 to 68), and that both SAP threshold (41, 95% CrI 14 to 64) and HRT II (39, 95% CrI 3 to 64) were significantly more sensitive than GAT. There was also evidence that GAT was significantly more specific than both FDT C-20-5 (19, 95% CrI 0 to 53) and SAP threshold (14, 95% CrI 1 to 37). Other differences in accuracy

between tests may well exist which could not be detected due to the high level of uncertainty. The wide credible intervals reflected the small number of studies reporting each test and the generally high level of heterogeneity. Due to the imprecision in the estimates, no test (or even a group of tests) was clearly more accurate, based upon a 5% significance level. Further analysis, at 10% and 20% levels of significance, identified additional statistically significant comparisons (Table 4). For example, in terms of sensitivity, at a 10% significance level FDT C-20-1 was better than SAP suprathreshold and at a 20% level better than optic disc photography, RNFL photography and FDT C-20-5. OKP was better than GAT at a 10% level and HRT II better than ophthalmoscopy at a 20% level. In terms of specificity, at a 20% level FDT C-20-1 was better than SAP threshold and FDT C-20-5.

Discussion

To our knowledge, this is the first systematic review of screening and diagnostic tests in glaucoma and includes 40 studies enrolling over 48,000 people and reporting nine tests. Most tests were reported by only a few, mostly heterogeneous, studies. The included studies reported tests of structure (ophthalmoscopy; optic disc photography, RNFL photography, HRT II), visual function (FDT, OKP, SAP) and IOP (GAT, NCT). Other tests were considered, including those of structure (GDx VCC, OCT, RTA), visual function (SWAP; MDP), or using Tonopen to measure IOP. However, no studies using these tests met our inclusion criteria in terms of reporting of test accuracy outcomes.

A systematic review of test accuracy is unlikely to identify the best test but can identify more promising tests. It is difficult to rank tests on paired values of sensitivity and specificity, as a highly specific test may be associated with a low sensitivity and vice versa. The choice of test depends on the importance of the trade

off between missed cases, and false positives. OAG affects an estimated 2% of the adult population; a test of low specificity would be likely to overburden a health service with people who do not have glaucoma and cause unnecessary anxiety for a many individuals, equally a test of low sensitivity would miss treatable disease which might be unacceptable to society. The DOR, a single measure of test accuracy, is a useful measure for comparing accuracy of several tests in a meta-analysis.¹⁵ Based on a $DOR \geq 50$, FDT C-20-1 and OKP (both tests of visual function) and HRT II (a test of glaucomatous optic neuropathy) merit further evaluation as to their performance as screening tests for glaucoma. It should be noted that these findings are relevant to the common cutoff point selected for each test; selection was based on the most frequently reported cut-off and when several cut-offs were reported the cut-off most likely to represent early glaucoma. Furthermore these findings are based on heterogeneous data of limited quality and as such are associated with considerable uncertainty.

Methods of meta-analysis of diagnostic accuracy which combine studies where both sensitivity and specificity vary have been available since 1990 and are continuing to evolve.^{13,62-66} These methods are based on the idea of a trade-off relationship between sensitivity and specificity, as occurs when studies vary in threshold, and aim to estimate the shape and position of the underlying Receiver Operating Curve. From the estimate of this curve it is possible to identify “operating points”. The approach adopted in our review identifies the average operating point for each test, and makes comparisons between them, based upon those studies reporting each test that share a common cut point. The Cochrane Collaboration are commencing publication of systematic reviews of diagnostic test accuracy and the analytical approach we have followed is the one that they are recommending.⁶⁷ Estimation of a summary point specific to a test being used at a common threshold

obtains the best estimate of test accuracy in parameters that are clinically meaningful. The trade-off between sensitivity and specificity is important in judging the performance of a test and is best depicted by a ROC curve across different cutoff points. However, the included studies did not usually provide information across the whole range of cutoff points to allow such analyses to be undertaken.

We used a Bayesian Hierarchical SROC model as standard methods for meta-analysis do not address the issue of threshold effect and are therefore not appropriate.⁶⁸ A number of different levels of analyses were undertaken, including an analysis where all tests were modelled simultaneously using this Bayesian approach. This allowed indirect comparison of sensitivities and specificities to be made, in addition to allowing DORs to be calculated, which is one of the advantages of the Bayesian method adopted. To produce results that are comparable to those from standard methods of meta-analysis we did not use informative priors.

In addition to providing sensitivity and specificity estimates we also reported the DOR results. Some meta-analysis models can only provide the DOR estimate and therefore we included this measure for comparability. A strength of the DOR is that it is a mathematically robust measure, (like the standard odds ratio) and represents diagnostic accuracy as a single value. However, a disadvantage is that different combinations of sensitivity and specificity values can lead to the same DOR value.

To be included studies had to meet specific inclusion criteria. The validity of indirect comparisons does depend upon assumptions regarding the characteristics of the included studies; however the indirect method is formally performing the comparison that users of the report are likely to make when assessing the pooled results for the individual tests. As such this method of indirect comparisons serves

an important purpose and reaffirms the lack of certainty about which test is indeed the best.

There are many potential sources of bias in primary diagnostic accuracy studies. Despite the huge volume of literature, no good quality studies were found providing a positive response to all questions on the modified QUADAS checklist. Based on limited evidence, of tests reported by higher quality studies, including the three tests that were considered to merit further evaluation, estimates of sensitivity and specificity varied according to study quality.

There is no universally agreed optimal reference standard for the diagnosis of OAG, although progressive structural optic neuropathy has been proposed as the best possible reference standard.^{69,70} In this review either of two reference standards were considered. There was no obvious pattern in terms of the sensitivity and specificity of the tests in the seven studies^{18,34,40,43,44,48,58} that used the first and best reference standard of OAG confirmed on longitudinal follow-up compared with the remainder that used ophthalmologist-diagnosed OAG. Although the latter is suboptimal compared with the former, it is the accepted reference standard in clinical practice. However establishing a reference standard in glaucoma is problematic, as in some people optic disc damage precedes visual field loss while in others the reverse is the case.

The accuracy of a test may vary according to the population in which it is performed. Samples with higher prevalence often arise through preferential inclusion of suspect cases, which shifts the disease severity to include more moderate and severe disease, and since it is easier to differentiate between severely diseased and non-diseased people, a test would be expected to report improved (apparent) sensitivity and specificity. Therefore studies with a significantly higher prevalence than expected in a screening population should be interpreted with this limitation in

mind.^{21,28-30,36,39} These studies, including two that met the criteria for higher quality studies,^{30,39} tended to recruit their participants through media advertising rather than contacting individuals in a predefined population and can be considered to be more representative of screening in higher-risk populations.

Twenty of the 40 studies included were hospital-based, which by nature, an enriched population, and likely to include a disproportionate number of participants with high IOP, and with previous experience of tests, potentially leading to over optimistic performance estimates.⁷¹⁻⁷⁴ The majority of the case-control studies identified applied stringent criteria for inclusion such as visual acuity of 6/9, or no other ocular disease and as such were highly prone to bias.⁷⁵ To minimise this spectrum bias, case-control studies (n=57) where the participants were considered unrepresentative of a case-mix found in a general population where OAG screening would be carried out were excluded from the review.

In the meta-analysis models for the individual tests, statistical heterogeneity was evident across most studies. Empirically, there was no obvious single cause for the heterogeneity, but potential contributory factors include differences in populations, study design, setting, prevalence and severity of glaucoma within studies. Other factors include differences in reference standard, and in tests included within the same category (e.g. different types of perimetry and ophthalmoscopy have a large number of variants, potentially leading to heterogeneity in discriminatory power across studies reporting those tests), and the extent to which studies were affected by other potential biases (e.g. partial and differential verification bias, incorporation bias, test and diagnostic review bias).

Limitations

Relatively few studies were identified for each test and it was not possible to perform sensitivity analysis based on study design. The common cutoff chosen for each test was the one most frequently reported across the included studies for that test, although this may not be the most appropriate. The majority of the studies were poorly reported, an issue that has been highlighted in recent literature.⁷⁶⁻⁷⁹ Only six of the 40 studies directly compared two or more tests. It was not possible to provide summary results of studies that directly compared tests because of small numbers. Studies not providing sufficient information to allow the calculation of 2 x 2 tables were excluded, although they may have contributed information in terms of sensitivity and specificity.

Systematic reviews provide a robust and rigorous evaluation of the available evidence, but by their nature as new studies are published the review requires updating. Since the completion of our meta-analysis further studies have been published on the performance of the tests included in this review. These include population-based studies in the USA, UK, Hungary, Japan and China. These studies provide additional information on the performance of FDT perimetry alone;⁸⁰⁻⁸² in combination with GDx VCC,⁸³ and combined with an IOP measurement⁸⁴ and data on the performance of HRT II in an elderly population in the UK⁸⁵ and in a community screening programme in Japan,⁸⁶ comparing HRT II with non-mydratic fundus photography. Although systematic reviews rapidly become out of date, which is a limitation, a strength of a systematic review is that the methods are transparent and reproducible such that the review can be updated as further data become available in the future. Priorities for future research and optimal study designs can also be identified.

Implications for Practice and Recommendations for Research

Ideally, a screening test for OAG should be safe, easy to administer and interpret, portable, quick, and acceptable to the people who are to be tested, and sufficiently valid to distinguish between those who do and do not have OAG. Many potential screening tests for glaucoma are available. Of the many candidate tests, no one test or group of tests was clearly more accurate. Based on limited data, relatively poorly performing tests, ophthalmoscopy, standard automated perimetry, retinal photography, and Goldmann applanation tonometry, were identified.

Frequency doubling technology, (C 20-1), Heidelberg Retinal Tomography and oculokinetic perimetry were identified as having better diagnostic performance than other candidate tests, although these findings were based on poor quality evidence. Further studies should evaluate the most promising tests in directly comparative studies in a relevant population.

Acknowledgements

This paper was developed from a Health Technology Assessment on the clinical and cost-effectiveness of screening for OAG, and funded by the UK National Institute for Health Research Health Technology Assessment programme (project number 04/08/02). The Health Services Research Unit and the Health Economics Research Unit are both core funded by the Chief Scientist Office of the Scottish Government Health Directorates. The views expressed in this report are those of the authors and not necessarily those of the funders. The authors are grateful to members of the OAG project group for assistance and comments on all stages of the review. Other members of the OAG Screening Project Group were: Rodolfo Hernandez, Luke Vale, Tania Lourenco, Cynthia Fraser, John Cairns, Richard Wormald, Stephen McPherson, David Wright, Kannaiyan Rabindranath, Rod Taylor, Norman Waugh and Adrian Grant.

References

- 1 Quigley HA, Broman AT. The number of people with glaucoma worldwide in 2010 and 2020. *Br J Ophthalmol* 2006;90:262-7.
- 2 Resnikoff S, Pascolini D, Etya'ale D, Kocur I, Pararajasegaram R, Pokharel GP et al. Global data on visual impairment in the year 2002. *Bull World Health Organ* 2004;82:844-51.
- 3 Grant WM, Burke JF, Jr. Why do some people go blind from glaucoma? *Ophthalmology* 1982;89:991-8.
- 4 Leske MC, Heijl A, Hussein M, Bengtsson B, Hyman L, Komaroff E. Factors for glaucoma progression and the effect of treatment: The Early Manifest Glaucoma Trial. *Arch Ophthalmol* 2003;121:48-56.
- 5 Wilson R, Walker AM, Dueker DK, Crick RP. Risk factors for rate of progression of glaucomatous visual field loss: a computer-based analysis. *Arch Ophthalmol* 1982;100:737-41.
- 6 Burr JM, Mowatt G, Hernandez R, Siddiqui MA, Cook J, Lourenco T et al. The clinical effectiveness and cost-effectiveness of screening for open angle glaucoma: a systematic review and economic evaluation. *Health Technol Assess* 2007;11:1-190.
- 7 Fleming C, Whitlock,E, Biel,T, Smit,B. *Primary care screening for ocular hypertension and primary open-angle glaucoma: Evidence Synthesis No 34 [document on the Internet]*. Agency for Healthcare Research & Quality, US Preventive Services Task Force; 2005 [accessed April 2008] Available from: URL: <http://www.ahrq.gov/clinic/uspstf05/glaucoma/glaucsyn.pdf>.
- 8 Maier PC, Funk J, Schwarzer G, Antes G, Falck-Ytter YT. Treatment of ocular hypertension and open angle glaucoma: meta-analysis of randomised controlled trials. *Br Med J* 2005;331:134-6.
- 9 Spry PG, Sparrow, JM. *An evaluation of open-angle glaucoma against the NSC criteria for screening viability, effectiveness and appropriateness [document on the Internet]*. UK National Screening Committee; 2005 [accessed April 2008] Available from: URL: <http://rms.nelh.nhs.uk/screening/viewResource.asp?categoryID=1352&dg=107&uri=http://libraries.nelh.nhs.uk/common/resources/?id=61002>.
- 10 FinOHTA. *Cost-effectiveness of glaucoma screening (project)*. Finish Office for Health Technology Assessment; 2005 [accessed April 2008] Available from: URL: <http://finohta.stakes.fi/EN/research/index.htm>.
- 11 *Screening for glaucoma: an update - non-systematic review (project)*. Agence d'Evaluation des Technologies et des Modes d'Intervention en Sante (AETMIS);

2007 [accessed April 2008] Available from: URL:
<http://www.aetmis.gouv.qc.ca>.

- 12 Whiting P, Rutjes AW, Reitsma JB, Bossuyt PM, Kleijnen J. The development of QUADAS: a tool for the quality assessment of studies of diagnostic accuracy included in systematic reviews. *BMC Med Res Methodol* 2003;3:Nov 10.
- 13 Rutter CM, Gatsonis CA. A hierarchical regression approach to meta-analysis of diagnostic test accuracy evaluations. *Stat Med* 2001;20:2865-84.
- 14 Spiegelhalter D, Thomas A, Best N. *WinBUGS: Bayesian inference using Gibbs sampling. User manual, version 1.4*. Cambridge: MRC Biostatistics Unit; 2003.
- 15 Glas AS, Lijmer JG, Prins MH, Bossel GJ, Bossuyt PM. The diagnostic odds ratio: a single indicator of test performance. *J Clin Epidemiol* 2003;56:1129-35.
- 16 Anton A, Andrada MT, Mujica V, Calle MA, Portela J, Mayo A. Prevalence of primary open-angle glaucoma in a Spanish population: the Segovia study. *J Glaucoma* 2004;13:371-6.
- 17 Bengtsson B. Findings associated with glaucomatous visual field defects. *Acta Ophthalmol (Copenh)* 1980;58:20-32.
- 18 Bonomi L, Marchini G, Marraffa M, Morbio R. The relationship between intraocular pressure and glaucoma in a defined population. Data from the Egna-Neumarkt Glaucoma Study. *Ophthalmologica* 2001;215:34-8.
- 19 Christoffersen T, Fors T, Waage S, Holtedahl K. Glaucoma screening with oculokinetic perimetry in general practice: is its specificity acceptable? *Eye* 1995;9:36-9.
- 20 Detry-Morel M, Zeyen T, Kestelyn P, Collignon J, Goethals M, Belgian Glaucoma Society. Screening for glaucoma in a general population with the non-mydratic fundus camera and the frequency doubling perimeter. *Eur J Ophthalmol* 2004;14:387-93.
- 21 Harasymowycz P, Papamatheakis D, Fansi AK, Gresset J, Lesk MR. Validity of screening for glaucomatous optic nerve damage using confocal scanning laser ophthalmoscopy (Heidelberg Retina Tomograph II) in high-risk populations: a pilot study. *Ophthalmology* 2005;112:2164-71.
- 22 Hollows FC, Graham PA. Intra-ocular pressure glaucoma and glaucoma suspects in a defined population. *Br J Ophthalmol* 1966;50:570-86.
- 23 Ivers RQ, Optom B, Macaskill P, Cumming RG, Mitchell P. Sensitivity and specificity of tests to detect eye disease in an older population. *Ophthalmology* 2001;108:968-75.
- 24 Katz J, Sommer A, Gaasterland DE, Anderson DR. Comparison of analytic algorithms for detecting glaucomatous visual field loss. *Arch Ophthalmol* 1991;109:1684-9.

- 25 Katz J, Tielsch JM, Quigley HA, Javitt J, Witt K, Sommer A. Automated suprathreshold screening for glaucoma: the Baltimore Eye Survey. *Invest Ophthalmol Vis Sci* 1993;34:3271-7.
- 26 Katz J, Quigley HA, Sommer A. Repeatability of the Glaucoma Hemifield Test in automated perimetry. *Invest Ophthalmol Vis Sci* 1995;36:1658-64.
- 27 Kozobolis VP, Detorakis ET, Tsilimbaris M, Siganos DS, Vlachonikolis IG, Pallikaris IG. Crete, Greece glaucoma study. *J Glaucoma* 2000;9:143-9.
- 28 Mansberger SL, Johnson CA, Cioffi GA, Choi D, Krishnadas SR, Srinivasan M et al. Predictive value of frequency doubling technology perimetry for detecting glaucoma in a developing country. *J Glaucoma* 2005;14:128-34.
- 29 Mundorf TK, Zimmerman TJ, Nardin GF, Kendall KS. Automated perimetry, tonometry, and questionnaire in glaucoma screening. *Am J Ophthalmol* 1989;108:505-8.
- 30 Robin TA, Muller A, Rait J, Keeffe JE, Taylor HR. Performance of community-based glaucoma screening using frequency doubling technology and Heidelberg retinal tomography. *Ophthalmic Epidemiol* 2005;12:167-78.
- 31 Tielsch JM, Katz J, Singh K, Quigley HA, Gottsch JD, Javitt J et al. A population-based evaluation of glaucoma screening: the Baltimore Eye Survey. *Am J Epidemiol* 1991;134:1102-10.
- 32 Vernon SA, Henry DJ, Cater L, Jones SJ. Screening for glaucoma in the community by non-ophthalmologically trained staff using semi automated equipment. *Eye* 1990;4:89-97.
- 33 Vernon SA, Jones SJ, Henry DJ. Maximising the sensitivity and specificity of non-contact tonometry in glaucoma screening. *Eye* 1991;5:491-3.
- 34 Vitale S, Smith TD, Quigley T, Kerrigan-Baumrind TA, Pease TE, Varma R et al. Screening performance of functional and structural measurements of neural damage in open-angle glaucoma: a case-control study from the Baltimore Eye Survey. *J Glaucoma* 2000;9:346-56.
- 35 Wang F, Quigley HA, Tielsch JM. Screening for glaucoma in a medical clinic with photographs of the nerve fiber layer. *Arch Ophthalmol* 1994;112:796-800.
- 36 Wang F, Tielsch JM, Ford DE, Quigley HA, Whelton PK. Evaluation of screening schemes for eye disease in a primary care setting. *Ophthalmic Epidemiol* 1998;5:69-82.
- 37 Weih LM, Nanjan M, McCarty CA, Taylor HR. Prevalence and predictors of open-angle glaucoma: results from the visual impairment project. *Ophthalmology* 2001;108:1966-72.
- 38 Wolfs RC, Ramrattan RS, Hofman A, de Jong PT. Cup-to-disc ratio: ophthalmoscopy versus automated measurement in a general population: The Rotterdam Study. *Ophthalmology* 1999;106:1597-601.

- 39 Yamada N, Chen PP, Mills RP, Leen MM, Lieberman MF, Stamper RL et al. Screening for glaucoma with frequency-doubling technology and Damato campimetry. *Arch Ophthalmol* 1999;117:1479-84.
- 40 Ekstrom C. Elevated intraocular pressure and pseudoexfoliation of the lens capsule as risk factors for chronic open angle glaucoma - a population based 5 year follow up study. *Acta Ophthalmol (Copenh)* 1993;71:189-95.
- 41 Hammond EA, Begley PK. Screening for glaucoma: a comparison of ophthalmoscopy and tonometry. *Nurs Res* 1979;28:371-2.
- 42 Khong JJ, Dimitrov PN, Rait J, McCarty CA. Can the specificity of the FDT for glaucoma be improved by confirming abnormal results? *J Glaucoma* 2001;10:199-202.
- 43 Leibowitz HM, Krueger DE, Maunder LR, Milton RC, Kini MM, Kahn HA et al. The Framingham Eye Study monograph: An ophthalmological and epidemiological study of cataract, glaucoma, diabetic retinopathy, macular degeneration, and visual acuity in a general population of 2631 adults, 1973-1975. *Surv Ophthalmol* 1980;24:335-610.
- 44 Marraffa M, Marchini G, Albertini R, Bonomi L. Comparison of different screening methods for the detection of visual field defects in early glaucoma. *Int Ophthalmol* 1989;13:43-5.
- 45 Schultz RO, Radius RL, Hartz AJ, Brown DB, Eytan ON, Ogawa GSH et al. Screening for glaucoma with stereo disc photography. *J Glaucoma* 1995;4:177-82.
- 46 Spry PGD, Hussin HM, Sparrow JM. Clinical evaluation of frequency doubling technology perimetry using the Humphrey Matrix 24-2 threshold strategy. *Br J Ophthalmol* 2005;89:1031-5.
- 47 Theodossiades J, Murdoch I. What optic disc parameters are most accurately assessed using the direct ophthalmoscope? *Eye* 2001;15:283-7.
- 48 Airaksinen PJ, Drance SM, Douglas GR, Mawson DK, Nieminen H. Diffuse and localized nerve fiber loss in glaucoma. *Am J Ophthalmol* 1984;98:566-71.
- 49 Anton A, Maquet JA, Mayo A, Tapia J, Pastor JC. Value of logistic discriminant analysis for interpreting initial visual field defects. *Ophthalmology* 1997;104:525-31.
- 50 Damato BE, Ahmed J, Allan D, McClure E, Jay JL. The detection of glaucomatous visual field defects by oculo-kinetic perimetry: which points are best for screening? *Eye* 1989;3:727-31.
- 51 Enger C, Sommer A. Recognizing glaucomatous field loss with the Humphrey STATPAC. *Arch Ophthalmol* 1987;105:1355-7.
- 52 Harper RA, Hill AR, Reeves BC. Effectiveness of unsupervised oculokinetic perimetry for detecting glaucomatous visual field defects. *Ophthalmic Physiol Opt* 1994;14:199-202.

- 53 Heeg GP, Blanksma LJ, Hardus PL, Jansonius NM. The Groningen Longitudinal Glaucoma Study. I. Baseline sensitivity and specificity of the frequency doubling perimeter and the GDx nerve fibre analyser. *Acta Ophthalmol Scand* 2005;83:46-52.
- 54 Heeg GP, Stoutenbeek R, Jansonius NM. Strategies for improving the diagnostic specificity of the frequency doubling perimeter. *Acta Ophthalmol Scand* 2005;83:53-6.
- 55 Jeong A, Murdoch I, Cousens S, Healey P, Theodossiades J. Sensitivity and specificity of two glaucoma case-finding strategies for optometrists. *Ophthalmic Physiol Opt* 2003;23:341-6.
- 56 Johnson CA, Cioffi GA, Van Buskirk EM. Evaluation of two screening tests for frequency doubling technology perimetry. 13th International Perimetric Society Meeting, Garda, Italy, September 1999. p. 103.
- 57 Quigley HA, Miller NR, George T. Clinical evaluation of nerve fiber layer atrophy as an indicator of glaucomatous optic nerve damage. *Arch Ophthalmol* 1980;98:1564-71.
- 58 Sommer A, Pollack I, Maumenee AE. Optic disc parameters and onset of glaucomatous field loss. II. Static screening criteria. *Arch Ophthalmol* 1979;97:1449-54.
- 59 Stoutenbeek R, Heeg GP, Jansonius NM. Frequency doubling perimetry screening mode compared to the full-threshold mode. *Ophthalmic Physiol Opt* 2004;24:493-7.
- 60 Wollstein G, Garway-Heath DF, Fontana L, Hitchings RA. Identifying early glaucomatous changes. Comparison between expert clinical assessment of optic disc photographs and confocal scanning ophthalmoscopy. *Ophthalmology* 2000;107:2272-7.
- 61 Wood CM. Limitations of direct ophthalmoscopy in screening for glaucoma. *Br Med J* 1987;294:1587-8.
- 62 Gatsonis C, Paliwal P. Meta-analysis of diagnostic and screening test accuracy evaluations: methodologic primer. *Am J Roentgenol* 2006;187:271-81.
- 63 Kardaun JW, Kardaun OJ. Comparative diagnostic performance of three radiological procedures for the detection of lumbar disk herniation. *Methods Inf Med* 1990;29:12-22.
- 64 Macaskill P. Empirical Bayes estimates generated in a hierarchical summary ROC analysis agreed closely with those of a full Bayesian analysis. *J Clin Epidemiol* 2004;57:925-32.
- 65 Moses LE, Shapiro D, Littenberg B. Combining independent studies of a diagnostic test into a summary ROC curve: data-analytic approaches and some additional considerations. *Stat Med* 1993;12:1293-316.

- 66 Reitsma JB, Glas AS, Rutjes AW, Scholten RJ, Bossuyt PM, Zwinderman AH. Bivariate analysis of sensitivity and specificity produces informative summary measures in diagnostic reviews. *J Clin Epidemiol* 2005;58:982-90.
- 67 *Cochrane Diagnostic Test Accuracy Working Group [website on the Internet]*. The Cochrane Collaboration; 2008 [accessed April 2008] Available from: URL: <http://srdta.cochrane.org/en/index.html>.
- 68 *Cochrane Handbook for Systematic Reviews of Interventions. Version 5.0.0 (updated February 2008) [document on the Internet]*. The Cochrane Library. Issue 2, 2008. Chichester, UK: John Wiley & Sons Ltd [accessed April 2008] Available from: URL: <http://www.cochrane-handbook.org/>.
- 69 Medeiros FA, Zangwill LM, Bowd C, Sample PA, Weinreb RN. Use of progressive glaucomatous optic disk change as the reference standard for evaluation of diagnostic tests in glaucoma. *Am J Ophthalmol* 2005;139:1010-8.
- 70 Weinreb RN, Khaw KT. Primary open-angle glaucoma. *Lancet* 2004;363:1711-20.
- 71 Wild JM, Kim LS, Pacey IE, Cunliffe IA. Evidence for a learning effect in short-wavelength automated perimetry. *Ophthalmology* 2006;113:206-15.
- 72 Yenice O, Temel A. Evaluation of two Humphrey perimetry programs: full threshold and SITA standard testing strategy for learning effect. *Eur J Ophthalmol* 2005;15:209-12.
- 73 Matsuo H, Tomita G, Suzuki Y, Araie M. Learning effect and measurement variability in frequency-doubling technology perimetry in chronic open-angle glaucoma. *J Glaucoma* 2002;11:467-73.
- 74 Joston PJ, Kamantigue ME, Chen PP. Learning effects among perimetric novices in frequency doubling technology perimetry. *Ophthalmology* 2002;109:757-60.
- 75 Rutjes AW, Reitsma JB, Di Nisio M, Smidt N, van Rijn JC, Bossuyt PM. Evidence of bias and variation in diagnostic accuracy studies. *Can Med Assoc J* 2006;174:469-76.
- 76 Bochmann F, Johnson Z, Azuara-Blanco A. Sample size of studies of diagnostic accuracy in ophthalmology: literature survey. *Br J Ophthalmol* 2007;91:898-900.
- 77 Johnson Z, Siddiqui MAR, Azuara-Blanco A. The quality of reporting of diagnostic accuracy studies of optical coherence tomography in glaucoma. *Ophthalmology* 2007;114:1607-12.
- 78 Paranjothy B, Shunmugam M, Azuara-Blanco A. The quality of reporting of diagnostic accuracy studies in glaucoma using scanning laser polarimetry. *J Glaucoma* 2007;16:670-5.
- 79 Shunmugam M, Azuara-Blanco A. The quality of reporting of diagnostic accuracy studies in glaucoma using the Heidelberg retina tomograph. *Invest Ophthalmol Vis Sci* 2006;47:2317-23.

- 80 Wang YX, Xu L, Zhang RX, Jonas JB. Frequency-doubling threshold perimetry in predicting glaucoma in a population-based study: The Beijing Eye Study. *Arch Ophthalmol* 2007;125:1402-6.
- 81 Mansberger SL, Johnson CA, Cioffi GA. The results of screening frequency doubling technology perimetry in different locations of the community. *J Glaucoma* 2007;16:73-80.
- 82 Iwase A, Tomidokoro A, Araie M, Shirato S, Shimizu H, Kitazawa Y et al. Performance of frequency-doubling technology perimetry in a population-based prevalence survey of glaucoma: the Tajimi study. *Ophthalmology* 2007;114:27-32.
- 83 Toth M, Kothy P, Vargha P, Hollo G. Accuracy of combined GDx-VCC and matrix FDT in a glaucoma screening trial. *J Glaucoma* 2007;16:462-70.
- 84 Vistamehr S, Shelsta HN, Palmisano PC, Filardo G, Bashford K, Chaudhri K et al. Glaucoma screening in a high-risk population. *J Glaucoma* 2006;15:534-40.
- 85 Hawker MJ, Vernon SA, Tattersall CL, Dua HS. Linear regression modeling of rim area to discriminate between normal and glaucomatous optic nerve heads: the Bridlington Eye Assessment Project. *J Glaucoma* 2007;16:345-51.
- 86 Ohkubo S, Takeda H, Higashide T, Sasaki T, Sugiyama K. A pilot study to detect glaucoma with confocal scanning laser ophthalmoscopy compared with nonmydriatic stereoscopic photography in a community health screening. *J Glaucoma* 2007;16:531-8.

Figure 1 Flow of studies through review process.

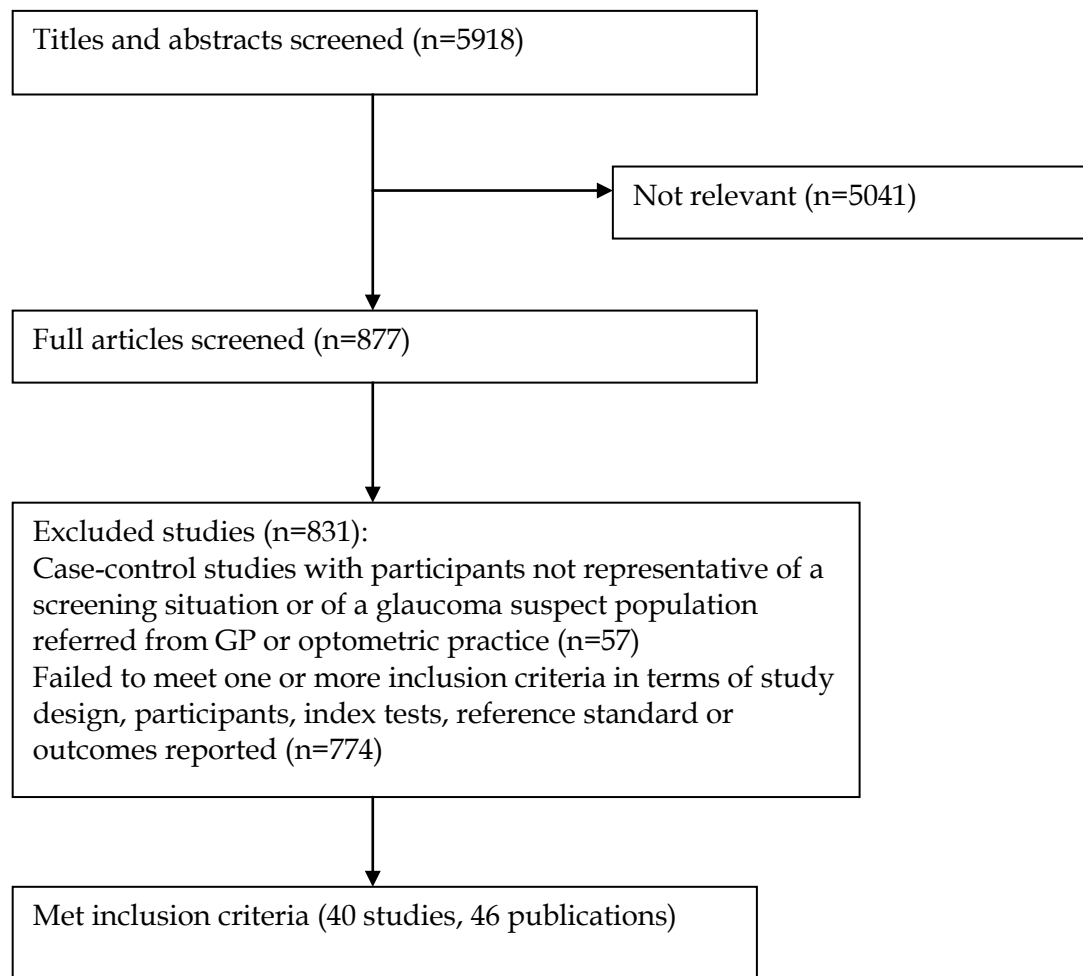
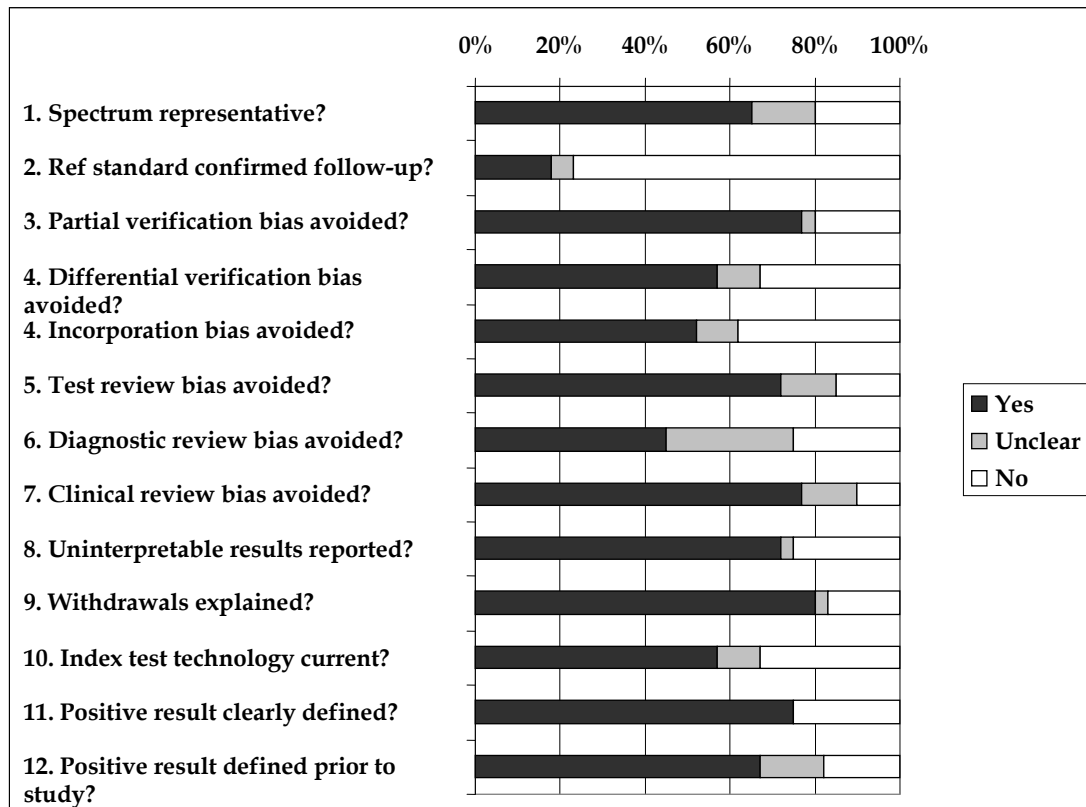


Figure 2 Results of the quality assessment of the 40 included studies.



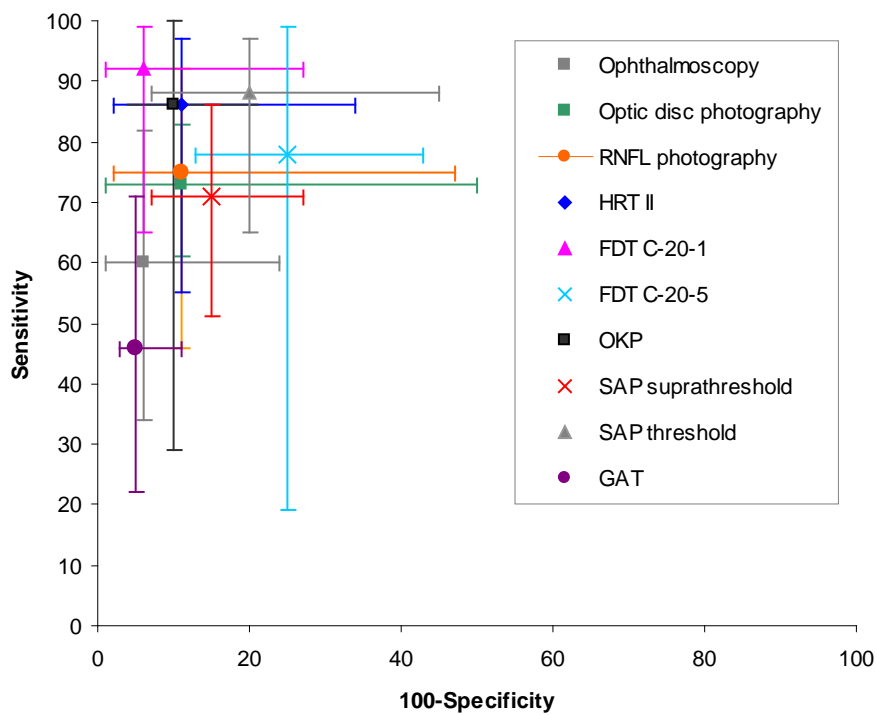
Notes:

1. Where a study reported two or more tests and they differed in meeting any one QUADAS criterion, e.g. one test checked 'Yes' and one checked 'No', then the 'No' answer was taken to represent the study for that item. This applied to the following studies for the following items:

- (i) Robin 2005.³⁰ Question 5 was Yes for FDT, No for HRT II, No for SAP.
- (ii) Wang 1998.³⁶ Question 5 was Yes for ophthalmoscopy, Yes for RNFL photography, No for SAP, No for GAT. Question 9 was Yes for RNFL photography, No for ophthalmoscopy, No for SAP, No for GAT.
- (iii) Marraffa 1989.⁴⁴ Question 11 was Yes for Henson, Unclear for the other perimetry tests.
- (iv) Spry 2005.⁴⁶ Questions 5 and 7 were Yes for FDT, No for SAP.
- (v) Harper 1994.⁵² Questions 5 and 12 were Yes for OKP, No for SAP.
- (vi) Quigley 1980.⁵⁷ Question 5 was Yes for RNFL, No for optic disc photography.

2. Unclear means insufficient information was provided to determine whether the item should be checked Yes or No.

Figure 3 Summary of sensitivity and specificity of tests included in the HSROC meta-analysis models.



Notes:

1. Number of studies: ophthalmoscopy (n = 5), optic disc photography (n = 6), RNFL photography (n = 4), HRT II (n = 3), FDT C-20-1 (n = 3), FDT C-20-5 (n = 5), OKP (n = 4), SAP suprathreshold (n = 9), SAP threshold (n = 5), GAT (n = 9).

Table 1 Characteristics of the included studies.

Study id	Index test(s)	Test(s) carried out and interpreted by	Reference Standard	Enrolled (people)	Analysed	Mean age (range)	Gender	Country	Time period
Population-based studies (cross-sectional)									
Anton 2004 ¹⁶	GAT	Ophthalmologists	Ophthalmic examination	569	510	(40 to 79)	M: 232; F: 278	Spain (Segovia Study)	N/S
Bengtsson 1980 ¹⁷	GAT	Ophthalmologists	Ophthalmic examination	1938	1511	(55 to 69)	N/S	Sweden(Dalby Population Survey)	1977 - 1978
Bonomi 2001 ¹⁸	GAT	Ophthalmologists	Follow-up confirmation	5816	4297 eyes of 4297 people	(40 to 80+)	M: 1882; F: 2415	Italy (Egna-Neumarkt Study)	N/S
Detry-Morel 2004 ²⁰	FDT C-20-5	Residents in training, paramedical staff	Ophthalmic examination	1802	3211 eyes of 1620 people	63 (22 to 97)	M: 680; F: 940	Belgium	October 1999
Harasymowycz 2005 ²¹	HRT II	Ophthalmic photographer	Ophthalmic examination	303	264 right eyes, 265 left eyes of 271 people	62.2 (SD 11.6)	M: 90; F: 179	Canada	August 2003 - February 2004
Hollows 1966 ²²	GAT	Ophthalmologists	Ophthalmic examination	4608	4231	55 (40 to 74)	Approx: M: 3639; F: 592	UK (Rhondda Valley Study)	Summer 1963
Ivers 2001 ²³	SAP suprathreshold; GAT	N/S	Ophthalmic examination	4433	3654 (both tests)	(49 to 97)	M: 1582; F: 2072	Australia (Blue Mountains Eye Study)	1992 - 1994
Katz 1991 ²⁴	SAP threshold	N/S	Ophthalmic examination	355	355 eyes of 355 people	Cases: 61; Controls: 53	N/S	USA (Glaucoma Screening Study)	1981 - 1992
Katz 1993 ²⁵	SAP suprathreshold	N/S	Ophthalmic examination	5308	4733	(40 to 80+)	M: 2109; F: 3199	USA (Baltimore Eye Survey)	Jan 1985 - Nov 1988

Study id	Index test(s)	Test(s) carried out and interpreted by	Reference Standard	Enrolled (people)	Analysed	Mean age (range)	Gender	Country	Time period
Kozobolis 2000 ²⁷	GAT	Uncertain	Ophthalmic examination	1300	1107	(40 to 80+)	M: 463; F: 644	Greece (Crete, Greece Glaucoma Study)	Feb 1993 – June 1998
Mansberger 2005 ²⁸	FDT C-20-5	N/S	Ophthalmic examination	296	251 eyes of 251 people	45 (30 to 65)	M: 117; F: 174	India	N/S
Mundorf 1989 ²⁹	SAP suprathreshold	N/S	Ophthalmic examination	145	145	71	M: 40; F: 105	USA	N/S
Robin 2005 ³⁰	Ophthalmoscopy; HRT II; SAP threshold; FDT C-20-5	Appropriately trained staff	Ophthalmic examination	704	261 eyes of 261 people (all tests)	65	M: 281; F: 378	Australia	Nov 2001
Weih 2001 ³⁷	Ophthalmoscopy	N/S	Consensus by panel of ophthalmologists, based on results of ophthalmic examination	4744	4636	59 (SD 12)	M: 2230; F: 2514	Australia (Visual Impairment Project)	1992 – 1996
Wolfs 1999 ³⁸	Optic disc photography	Technicians	Ophthalmic examination	6777	5143 eyes of 5143 people	(55 and over)	N/S	Netherlands (Rotterdam Study)	N/S
Yamada 1999 ³⁹	OKP; FDT C-20-1	Technicians	Decision of glaucoma specialists, based on ophthalmic records	259	175 eyes of 175 people (OKP); 240 eyes of 240 people (FDT)	FDT: 59.6 (SD 14.7); OKP: 58.8 (SD 15.6)	M: 108; F: 135	USA	N/S

Study id	Index test(s)	Test(s) carried out and interpreted by	Reference Standard	Enrolled (people)	Analysed	Mean age (range)	Gender	Country	Time period
Population-based studies (cohort)									
Christoffersen 1995 ¹⁹ Patient source: general practice	OKP	GPs, medical secretaries	Ophthalmic examination	195	187	57 (40 to 84)	M: 51; F: 136	Norway	N/S
Vernon 1990 ³² Patient source: general practice	Ophthalmoscopy; SAP suprathreshold; NCT	Ophthalmoscopy: experienced ophthalmologists; NCT/SAP: non-ophthalmological trained staff	Ophthalmic examination	988	854(ophth); 855 (SAP); 874 (NCT)	65	M: 374; F: 500	UK	N/S
Wang 1998 ³⁶ Patient source: general practice	Ophthalmoscopy; SAP suprathreshold; GAT [RNFL photography]	N/S	Ophthalmic examination	530 (from primary care clinic)	400(ophth); 214 (SAP); 357 (GAT) [136 (RNFL photo)]	(40 to 65+)	M: 111; F: 294	USA	Jul 1991 – Feb 1992
Population-based studies (case-control)									
Vitale 2000 ³⁴ Patient source: Cases and controls: sample of patients with and without glaucoma from the Baltimore Eye Study Follow-up	Optic disc photography; SAP suprathreshold	Experienced technicians	Follow-up confirmation	249	182 (disc photo); 228 (SAP);	68	M: 100; F: 149	USA (Baltimore Eye Study Follow-up Study)	1994

Study id	Index test(s)	Test(s) carried out and interpreted by	Reference Standard	Enrolled (people)	Analysed	Mean age (range)	Gender	Country	Time period
Study									
Already suspect population (cohort studies)									
Ekstrom 1993 ⁴⁰ Patient source: people previously examined in a population-based glaucoma survey	GAT	N/S	Follow-up confirmation	760	413	(65 to 74)	M: 364; F: 396	Sweden(Tierp Glaucoma Survey)	Mar 1984 - Mar 1986
Hammond 1979 ⁴¹ Patient source: eye clinic	Ophthalmoscopy	Nurses skilled in use of the ophthalmoscope	Ophthalmic examination	219	188	(21 and over)	N/S	USA	N/S
Khong 2001 ⁴² Patient source: eye clinics	FDT C-20-5	N/S	Ophthalmic examination	228	113	68.5 (23 to 91)	M: 104; F: 119	Australia	Dec 1999 - Jan 2000
Leibowitz 1980 ⁴³ Patient source: Framingham Eye Study	GAT	Generally performed by 2 nd or 3 rd year residents in ophthalmology	Follow-up confirmation	2631	574	(<65 to 75+)	M: 272; F: 302	USA (Framingham Eye Study)	Feb 1973 - Feb 1975
Marraffa 1989 ⁴⁴ Patient source: eye clinic	SAP suprathreshold	Ophthalmologists	Follow-up confirmation	104	182 eyes of 104 people	54.3 (18 to 76)	M:45; F: 59	Italy	N/S
Schultz 1995 ⁴⁵ Patient source: clinical practices of	Optic disc photography	Carried out: N/S Interpreted: 3 rd year ophthalmology	Ophthalmic examination	258	365 eyes of ? people	(<40 to >70)	M: 112; F: 144; Unknown: 2	USA	N/S

Study id	Index test(s)	Test(s) carried out and interpreted by	Reference Standard	Enrolled (people)	Analysed	Mean age (range)	Gender	Country	Time period
glaucoma specialist, cataract surgeon and general ophthalmologist		residents							
Spry 2005 ⁴⁶ Patient source: hospital eye service	SAP threshold; FDT C-20 matrix	SAP: clinic staff trained in visual field testing; FDT: N/S	Ophthalmic examination	48	48 (both tests)	67.3 (SD 13.5)	M: 24; F: 24	UK	Oct 2003 – Jan 2004
Theodossiadis 2001 ⁴⁷ Patient source: glaucoma clinics	Ophthalmoscopy	Optometrists	Ophthalmic examination	50	50 eyes of 50 people	N/S	N/S	UK	N/S
Already suspect population (case-control studies)									
Airaksinen 1984 ⁴⁸ Patient source: not stated	RNFL photography	N/S	Follow-up confirmation	142	132 eyes of 132 people	Glaucoma: 62 (SD 20.5) Normal: 54 (SD 16.9); OHT: 57 (SD 12.7)	N/S	Canada + Finland	N/S
Anton 1997 ⁴⁹ Patient source: Cases and controls: glaucoma unit	SAP threshold	Uncertain	Ophthalmic examination	180	180 eyes of 180 people	Glaucoma: 61 (SD 8); Normal: 59 (SD 9)	N/S	Spain	N/S
Damato 1989 ⁵⁰ Patient source:	OKP	Staff experienced in perimetry	Ophthalmic examination	102	102 eyes of 102 people	Glaucoma: 57.3;	N/S	UK	N/S

Study id	Index test(s)	Test(s) carried out and interpreted by	Reference Standard	Enrolled (people)	Analysed	Mean age (range)	Gender	Country	Time period
Cases: not stated Controls: dermatology ward, hospital staff, relatives/ friends of patients, patients with unilateral non-glaucomatous disease affecting the fellow eye						Normal: 54.4			
Enger 1987 ⁵¹ Patient source: Cases and controls: nerve fibre layer study	SAP threshold	N/S	Ophthalmic examination	112	170 eyes of 112 people	Glaucoma: 61 (28 to 80); Normal: 51 (26 to 75)	N/S	USA	N/S
Harper 1994 ⁵² Patient source: not stated	OKP; SAP suprathreshold	Uncertain	Ophthalmic examination	212	193 (OKP); 212 (SAP)	Glaucoma: 67.8 (43 to 85); Normal: 61.5 (41 to 85)	N/S	UK	N/S
Heeg 2005 ⁵³ Patient source: Cases: glaucoma outpatient	FDT C-20-1; FDT C-20 full threshold	N/S	Ophthalmic examination	1112	208 (FDT C-20-1); 1112 (FDT C-20 full threshold)	Glaucoma: 65 (13 to 91); Normal: 63 (33 to 94)	Eligible :Glaucoma: M: 509; F: 542 Normal:	Netherlands (Groningen Longitudinal Glaucoma Study)	Jul 2000 – Jun 2001

Study id	Index test(s)	Test(s) carried out and interpreted by	Reference Standard	Enrolled (people)	Analysed	Mean age (range)	Gender	Country	Time period
department Controls: old people's homes, blood bank, other public places							M: 118; F: 119		
Ieong 2003 ⁵⁵ Patient source: Cases: glaucoma subjects Controls: partners of cases, optometrist practice	HRT II; SAP suprathreshold	Optometrists	Ophthalmic examination	66	66 eyes of 66 people (both tests)	Glaucoma: 69; Normal: 60	Glaucoma: M: 16; F: 13 Normal: M: 16; F: 21	UK	N/S
Johnson 1999 ⁵⁶ Patient source: not stated	FDT C-20-1	N/S	Ophthalmic examination	108	160 eyes of 108 people	Glaucoma: 64 (35 to 85); Normal: 46 (18 to 81)		USA	N/S
Quigley 1980 ⁵⁷ Patient source: Cases and controls: ophthalmologic institute	Optic disc photography; RNFL photography	Ophthalmologists	Ophthalmic examination	175	294 eyes of ? people (both tests)	Readable photos: Glaucoma: 52.7 (SD 2.78); Glaucoma suspect: 45.2 (SD 1.56); Normal:	M: 86; F: 89	USA	Jan 1978 - Apr 1979

Study id	Index test(s)	Test(s) carried out and interpreted by	Reference Standard	Enrolled (people)	Analysed	Mean age (range)	Gender	Country	Time period
						37.9 (SD 2.8) Unreadable photos: Glaucoma: 62.5 (SD 4.0); Glaucoma suspect: 59.6 (SD 6.3); Normal: 50 (SD 12.1)			
Sommer 1979 ⁵⁸ Patient source: Cases and controls: glaucoma clinic	Optic disc photography; RNFL photography	N/S	Follow-up confirmation	Unclear	223 eyes of ? people (both tests)	N/S	N/S	USA	N/S
Wollstein 2000 ⁶⁰ Patient source: Cases: glaucoma clinic and ocular hypertension clinic Controls: spouses or friends of patients, responders to	Optic disc photography	Photos taken by trained technicians; assessed by glaucoma consultants, glaucoma fellow, clinical glaucoma technician	Ophthalmic examination	123	123 eyes of 123 people	Glaucoma: 65.1 (SD 10.06); Normal: 57.1 (SD 12.52)	N/S	UK	N/S

Study id	Index test(s)	Test(s) carried out and interpreted by	Reference Standard	Enrolled (people)	Analysed	Mean age (range)	Gender	Country	Time period
an advert									
Wood 1987 ⁶¹ Patient source: not stated	Ophthalmoscopy	Ophthalmologists; junior doctors	Ophthalmic examination	22	43 eyes of 22 people	(32 to 75)	N/S	UK	N/S

Notes:

1. N/S, not stated.
2. Numbers analysed are people unless otherwise stated.
3. Study ids in brackets eg [Vernon 1991] are secondary reports that also contribute outcome data.

Table 2 HSROC analysis: all studies compared with higher quality studies.

	Optic disc photography		HRT II		FDT C-20-5		SAP threshold	
	Sensitivity % (95% CrI)	Specificity % (95% CrI)	Sensitivity % (95% CrI)	Specificity % (95% CrI)	Sensitivity % (95% CrI)	Specificity % (95% CrI)	Sensitivity % (95% CrI)	Specificity % (95% CrI)
All studies	73 (61 to 83)	89 (50 to 99)	86 (55 to 97)	89 (66 to 98)	78 (19 to 99)	75 (57 to 87)	88 (65 to 97)	80 (55 to 93)
Higher quality	74 (30 to 95)	82 (45 to 97)	93 (58 to 99)	85 (47 to 97)	72 (26 to 96)	60 (17 to 92)	73 (28 to 95)	64 (22 to 92)

Notes:

1. Optic disc photography (all studies n = 6, higher quality studies n = 3); HRT II (all studies n = 3, higher quality studies n = 2); FDT C-20-5 (all studies n = 5, higher quality studies n = 2); SAP threshold (all studies n = 5, higher quality studies n = 2).

Table 3 Sensitivity, specificity, DOR and relative DOR at the common cutoff for studies directly comparing tests.

Study id	Test	Common cutoff	Sens % (95% CI)	Spec % (95% CI)	DOR (95% CI)	RDOR (95% CI)
Vitale 2000 ³⁴	SAP supra	3 adjacent points missed	50 (37 to 63)	83 (76 to 88)	5 (3 to 9)	1
	Optic disc photo	VCDR > 0.6	77 (62 to 89)	59 (50 to 67)	5 (2 to 11)	0.99 (0.36 to 2.75)
Ieong 2003 ⁵⁵	SAP supra	Optometrist judgement	72 (53 to 87)	95 (82 to 99)	46 (9 to 237)	1
	HRT II	Global/one of six segments abnormal	69 (49 to 85)	95 (82 to 99)	39 (8 to 198)	0.85 (0.08 to 8.54)
Robin 2005 ³⁰	SAP threshold	AGIS score \geq 3 [common cutoff]	63 (38 to 84)	74 (68 to 80)	5 (2 to 13)	1
	HRT II	\geq 1 borderline or 1 severe abnormality	95 (74 to 100)	81 (75 to 85)	75 (10 to 574)	15.01 (1.57 to 143.82)
	FDT C-20-5	One abnormal point	84 (60 to 97)	55 (49 to 61)	7 (2 to 23)	1.31 (0.27 to 6.43)
Spry 2005 ⁴⁶	SAP threshold	GHT outside normal limit and/or $p < 0.05$ with the PSD global index in one/ both eyes	80 (52 to 96)	52 (34 to 69)	4 (1 to 18)	1
	FDT C-20 matrix		100 (78 to 100)	27 (13 to 46)	12 (1 to 222)	2.83 (0.11 to 72.91)
Ivers 2001 ²³	SAP supra	3 or more points missing	89 (80 to 94)	73 (71 to 74)	20 (10 to 39)	1
	GAT	IOP > 22 mmHg	14 (7 to 23)	98 (97 to 98)	6 (3 to 12)	0.31 (0.12 to 0.78)
Wang 1998 ³⁶	SAP supra	Absolute or relative defects \geq 17	70 (57 to 80)	67 (59 to 74)	5 (2 to 9)	1
	GAT	IOP > 21 mmHg	28 (17 to 40)	96 (93 to 98)	9 (4 to 19)	1.89 (0.70 to 5.13)

Notes:

1. RDOR = Relative DOR= index test DOR/ SAP DOR.
2. RDOR calculated as all direct studies had SAP as one of the tests. Values of RDOR > 1 indicate that the test performed better than SAP in the study and values < 1 indicate that the test performed worse than SAP.
3. AGIS, Advanced Glaucoma Intervention Study; GHT, Glaucoma Hemifield Test; PSD, Pattern Standard Deviation.

Table 4 Pair-wise indirect comparisons of tests in a single HSROC model.

		Ophthalmoscopy (60%, 94%) <i>versus</i>	Optic disc photography (73%, 89%) <i>versus</i>	RNFL photography (75%, 88%) <i>versus</i>	HRT II (86%, 89%) <i>versus</i>	OKP (86%, 90%) <i>versus</i>	SAP supra (71%, 85%) <i>versus</i>	SAP threshold (88%, 80%) <i>versus</i>	FDT	
									C-20-1 (92%, 94%) <i>versus</i>	C-20-5 (78%, 75%) <i>versus</i> GAT (46%, 95%)
Optic disc photo		-12 (-46 to 20) 6 (-7 to 21)	↓	↓	↓	↓	↓	↓	↓	↓
	RNFL photo	-14 (-50 to 26) 6 (-7 to 30)	-2 (-31 to 34) -0 (-17 to 24)	↓	↓	↓	↓	↓		
HRT II		-24 (-57 to 14) ⁵ 5 (-9 to 30)	-12 (-38 to 22) -1 (-18 to 24)	-10 (-45 to 25) -1 (-25 to 24)	↓	↓	↓	↓	↓	↓
OKP		-20 (-54 to 19) 4 (-9 to 26)	-8 (-35 to 27) -2 (-18 to 21)	-6 (-43 to 30) -1 (-26 to 22)	4 (-29 to 38) -1 (-26 to 22)	↓	↓	↓		
SAP supra		-10 (-43 to 20) 9 (-4 to 22) ⁵	2 (-23 to 25) 3 (-13 to 17)	4 (-31 to 29) 3 (-21 to 18)	14 (-18 to 36) 4 (-21 to 19)	10 (-24 to 34) 5 (-18 to 19)	↓	↓	↓	↓
SAP threshold		-26 (-58 to 2) ⁴ 14 (-2 to 37) ⁴	-14 (-38 to 7) ⁵ 8 (-11 to 31)	-12 (-46 to 12) 8 (-17 to 32)	-2 (-34 to 18) 9 (-18 to 33)	-6 (-39 to 16) 10 (-15 to 34)	-16 (-37 to 5) ⁵ 5 (-12 to 28)	↓		
FDT	C-20-1	-30 (-62 to -0) ³ 0 (-11 to 18)	-18 (-42 to 6) ⁵ -6 (-21 to 12)	-16 (-50 to 10) -5 (-29 to 13)	-6 (-38 to 17) ⁵ -4 (-29 to 14)	-10 (-42 to 14) -3 (-26 to 14)	-20 (-40 to 3) ⁴ -8 (-22 to 9)	-4 (-23 to 18) -13 (-36 to 6) ⁵	↓	↓
	C-20-5	-11 (-49 to 32) 19 (-2 to 53) ⁴	1 (-30 to 40) 12 (-10 to 47)	3 (-36 to 44) 12 (-16 to 47)	12 (-23 to 52) 13 (-16 to 49)	9 (-29 to 49) 14 (-13 to 49)	-1 (-29 to 38) 10 (-12 to 45)	15 (-11 to 53) 5 (-23 to 41)		
GAT		15 (-22 to 47) -0 (-12 to 7)	27 (-4 to 53) ⁴ -6 (-21 to 3) ⁵	29 (-10 to 57) -6 (-30 to 4)	39 (3 to 64) ³ -5 (-30 to 5)	35 (-2 to 62) ⁴ -4 (-26 to 5)	25 (-2 to 50) ⁴ -9 (-22 to 0) ⁴	41 (14 to 64) ³ -14 (-37 to -1) ³	45 (17 to 68) ³ -0 (-18 to 8)	26 (-16 to 57) -19 (-53 to -0) ³

Notes:

1. In the column headings the summary sensitivity and specificity values from the HSROC meta-analysis models are shown after the name of the test.
2. Test A (column) versus test B (row) = A – B. For each comparison, within each cell, the top row is the median difference in sensitivity (95% CrI) and the bottom row is the median difference in specificity (95% CrI).
3. Statistically significant difference at 5% significance level.
4. Statistically significant difference at 10% significance level.
5. Statistically significant difference at 20% significance level.

Appendix 1 Summary of sensitivity, specificity and DOR for tests included in the HSROC meta-analysis models.

Test	Number of studies	Common cutoff	Sensitivity % (95% CrI)	Specificity % (95% CrI)	DOR (95% CrI)
Ophthalmoscopy	5	VCDR \geq 0.7	60 (34 to 82)	94 (76 to 99)	26 (6 to 110)
Optic disc photography	6	VCDR \geq 0.6	73 (61 to 83)	89 (50 to 99)	22 (3 to 148)
RNFL photography	4	Diffuse and/or localised defect	75 (46 to 92)	88 (53 to 98)	23 (4 to 124)
HRT II	3	\geq 1 borderline or outside normal limits	86 (55 to 97)	89 (66 to 98)	51 (11 to 246)
FDT	C-20-1	1 abnormal point	92 (65 to 99)	94 (73 to 99)	181 (25 to 2139)
	C-20-5	1 abnormal point	78 (19 to 99)	75 (57 to 87)	10 (0.7 to 249)
OKP	4	1 abnormal point	86 (29 to 100)	90 (79 to 96)	58 (4 to 1585)
SAP suprathereshold	9	\geq 3 points missing	71 (51 to 86)	85 (73 to 93)	14 (6 to 34)
SAP threshold	5	AGIS score \geq 3	88 (65 to 97)	80 (55 to 93)	30 (6 to 159)
GAT	9	IOP > 21 mmHg	46 (22 to 71)	95 (89 to 97)	15 (4 to 49)

Notes:

1. The common cutoff was considered to also include the following cutoffs: Ophthalmoscopy (discs graded as normal or suspicious, subjective criteria); Optic disc photography (VCDR \geq 0.7, normal/glaucomatous disc based on majority opinion of observers); RNFL photography (NFL lost); HRT II (global or 1 of the 6 segments flagged abnormal); OKP (1 or more points missing, ~~at~~ 1 chart numbers consistently made the black stimulus disappear); SAP suprathereshold (\geq 17 relative or absolute defects and/or cluster of 8 in any one quadrant, \geq 4 abnormal points in any single quadrant, sufficient points to drop the indicator into the suspicious zone or below, 3 abnormal adjacent points, missed point, optometrist judgement, at least 1 absolute defect associated with 1 relative defect or 3 adjacent relative defects or 4 non-adjacent relative defects or sure nasal step); SAP threshold (cross meridional, GHT abnormal/borderline, LDA 59 points, mirror image method, GHT outside normal limit and/or PSD $p < 0.05$ in on or both eyes); GAT (IOP \geq 21 mmHg, IOP 21-22 mmHG, IOP > 22 mmHG).
2. NFL, nerve fibre layer, AGIS, Advanced Glaucoma Intervention Study, GHT, Glaucoma Hemifield Test, LDA, Logistic Discriminant Analysis.